

## Product datasheet for **TA331270**

### **SURF5 (MED22) Rabbit Polyclonal Antibody**

#### **Product data:**

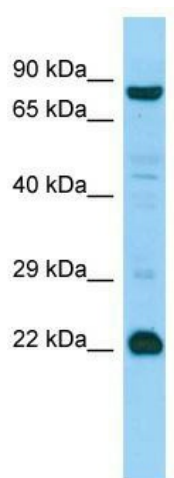
Product Type:	Primary Antibodies
Applications:	WB
Recommended Dilution:	WB
Reactivity:	Human
Host:	Rabbit
Isotype:	IgG
Clonality:	Polyclonal
Immunogen:	The immunogen for Anti-MED22 antibody is: synthetic peptide directed towards the middle region of Human MED22. Synthetic peptide located within the following region: SVNEAIDQRNQQLRTLQEECDRKLITLRDEISIDLVELEEEYSSSSSLC
Formulation:	Liquid. Purified antibody supplied in 1x PBS buffer with 0.09% (w/v) sodium azide and 2% sucrose. <i>Note that this product is shipped as lyophilized powder to China customers.</i>
Conjugation:	Unconjugated
Storage:	Store at -20°C as received.
Stability:	Stable for 12 months from date of receipt.
Predicted Protein Size:	22 kDa
Gene Name:	mediator complex subunit 22
Database Link:	<a href="#">NP_598395</a> <a href="#">Entrez Gene 6837 Human</a> <a href="#">Q15528</a>
Background:	This gene is located in the surfeit gene cluster, a group of very tightly linked housekeeping genes that do not share sequence similarity. The gene is oriented in a head-to-head fashion with RPL7A (SURF3) and the two genes share a bidirectional promoter. The encoded proteins are localized to the cytoplasm. Two alternative transcript variants encoding different isoforms have been identified for this gene.
Synonyms:	MED24; surf-5; SURF5



[View online »](#)

**Note:** Rat: 100%; Human: 100%; Dog: 93%; Pig: 93%; Horse: 93%; Mouse: 93%; Bovine: 93%;  
Zebrafish: 93%; Guinea pig: 93%

### Product images:



WB Suggested Anti-MED22 Antibody; Titration:  
1.0 ug/ml; Positive Control: Hela Whole Cell