

Product datasheet for **TA331268**

KRT85 Rabbit Polyclonal Antibody

Product data:

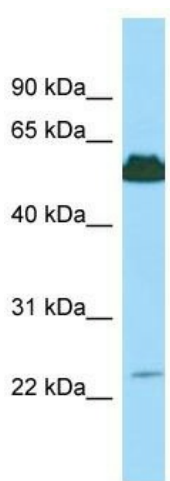
Product Type:	Primary Antibodies
Applications:	WB
Recommended Dilution:	WB
Reactivity:	Human
Host:	Rabbit
Isotype:	IgG
Clonality:	Polyclonal
Immunogen:	The immunogen for Anti-KRT85 antibody is: synthetic peptide directed towards the C-terminal region of Human KRT85. Synthetic peptide located within the following region: DVASRSRAEAEWYRSKCEEMKATVIRHGETLRRRTKEEINELNRMIQRLT
Formulation:	Liquid. Purified antibody supplied in 1x PBS buffer with 0.09% (w/v) sodium azide and 2% sucrose.
Purification:	Affinity Purified
Conjugation:	Unconjugated
Storage:	Store at -20°C as received.
Stability:	Stable for 12 months from date of receipt.
Predicted Protein Size:	55 kDa
Gene Name:	keratin 85
Database Link:	NP_002274 Entrez Gene 3891 Human P78386
Background:	The protein encoded by this gene is a member of the keratin gene family. As a type II hair keratin, it is a basic protein which heterodimerizes with type I keratins to form hair and nails. The type II hair keratins are clustered in a region of chromosome 12q13 and are grouped into two distinct subfamilies based on structure similarity. One subfamily, consisting of KRTHB1, KRTHB3, and KRTHB6, is highly related. The other less-related subfamily includes KRTHB2, KRTHB4, and KRTHB5.
Synonyms:	ECTD4; Hb-5; HB5; hHb5; K85; KRTHB5



[View online »](#)

Note: Dog: 100%; Pig: 100%; Horse: 100%; Human: 100%; Sheep: 100%; Bovine: 100%; Rabbit: 100%; Rat: 93%; Mouse: 93%

Product images:



Host: Rabbit
Target Name: KRT85
Sample Tissue: 721_B Cell Lysate
Antibody Dilution: 1.0µg/ml

Host: Rabbit; Target Name: KRT85; Sample Tissue: 721_B Whole Cell lysates; Antibody Dilution: 1.0ug/ml