

## Product datasheet for **TA331267**

### KRT85 Rabbit Polyclonal Antibody

#### Product data:

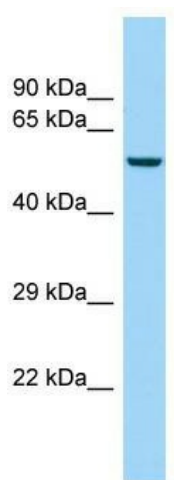
Product Type:	Primary Antibodies
Applications:	WB
Recommended Dilution:	WB
Reactivity:	Human
Host:	Rabbit
Isotype:	IgG
Clonality:	Polyclonal
Immunogen:	The immunogen for Anti-KRT85 antibody is: synthetic peptide directed towards the N-terminal region of Human KRT85. Synthetic peptide located within the following region: CGSPPCITTVSVNESLLTPLNLEIDPNAQCVKQEEKEQIKSLNSRFAAF
Formulation:	Liquid. Purified antibody supplied in 1x PBS buffer with 0.09% (w/v) sodium azide and 2% sucrose. <i>Note that this product is shipped as lyophilized powder to China customers.</i>
Conjugation:	Unconjugated
Storage:	Store at -20°C as received.
Stability:	Stable for 12 months from date of receipt.
Predicted Protein Size:	56 kDa
Gene Name:	keratin 85
Database Link:	<a href="#">NP_002274</a> <a href="#">Entrez Gene 3891 Human P78386</a>
Background:	The protein encoded by this gene is a member of the keratin gene family. As a type II hair keratin, it is a basic protein which heterodimerizes with type I keratins to form hair and nails. The type II hair keratins are clustered in a region of chromosome 12q13 and are grouped into two distinct subfamilies based on structure similarity. One subfamily, consisting of KRTHB1, KRTHB3, and KRTHB6, is highly related. The other less-related subfamily includes KRTHB2, KRTHB4, and KRTHB5.
Synonyms:	ECTD4; Hb-5; HB5; hHb5; K85; KRTHB5



[View online »](#)

**Note:** Human: 100%; Pig: 93%; Horse: 92%; Sheep: 92%; Bovine: 92%; Dog: 86%; Rat: 86%; Mouse: 86%; Rabbit: 86%; Guinea pig: 86%

### Product images:



WB Suggested Anti-KRT85 Antibody; Titration: 1.0 ug/ml; Positive Control: OVCAR-3 Whole Cell. KRT85 is supported by BioGPS gene expression data to be expressed in OVCAR3