

Product datasheet for **TA331266**

Keratin 77 (KRT77) Rabbit Polyclonal Antibody

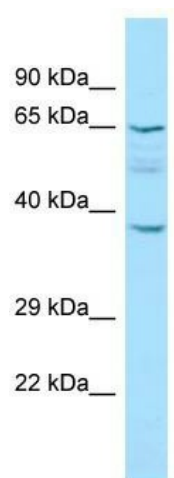
Product data:

Product Type:	Primary Antibodies
Applications:	WB
Recommended Dilution:	WB
Reactivity:	Human
Host:	Rabbit
Isotype:	IgG
Clonality:	Polyclonal
Immunogen:	The immunogen for Anti-KRT77 antibody is: synthetic peptide directed towards the C-terminal region of Human KRT77. Synthetic peptide located within the following region: VRTQYELIAQRSKDEAEALYQTKYQELQITAGRHGDDLKNSKMEIAELNR
Formulation:	Liquid. Purified antibody supplied in 1x PBS buffer with 0.09% (w/v) sodium azide and 2% sucrose.
Conjugation:	Unconjugated
Storage:	Store at -20°C as received.
Stability:	Stable for 12 months from date of receipt.
Predicted Protein Size:	62 kDa
Gene Name:	keratin 77
Database Link:	NP_778253 Entrez Gene 374454 Human Q7Z794
Background:	Keratins are intermediate filament proteins responsible for the structural integrity of epithelial cells and are subdivided into epithelial keratins and hair keratins. This gene encodes an epithelial keratin that is expressed in the skin and eccrine sweat glands. The type II keratins are clustered in a region of chromosome 12q13.
Synonyms:	K1B; KRT1B
Note:	Human: 100%; Rat: 93%; Mouse: 93%; Dog: 92%; Pig: 92%; Horse: 92%; Sheep: 92%; Bovine: 92%; Rabbit: 92%



[View online »](#)

Product images:



WB Suggested Anti-KRT77 Antibody; Titration: 1.0 ug/ml; Positive Control: 721_B Whole Cell