

Product datasheet for **TA331264**

KDM1B Rabbit Polyclonal Antibody

Product data:

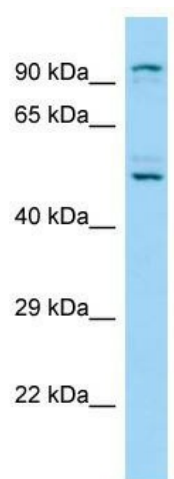
Product Type:	Primary Antibodies
Applications:	WB
Recommended Dilution:	WB
Reactivity:	Human
Host:	Rabbit
Isotype:	IgG
Clonality:	Polyclonal
Immunogen:	The immunogen for Anti-KDM1B antibody is: synthetic peptide directed towards the N-terminal region of Human KDM1B. Synthetic peptide located within the following region: ASASERCAKNGYTSRWYHLSCGEHFCNECFDHYRSHKDG YDKYTTWKKI
Formulation:	Liquid. Purified antibody supplied in 1x PBS buffer with 0.09% (w/v) sodium azide and 2% sucrose. <i>Note that this product is shipped as lyophilized powder to China customers.</i>
Purification:	Affinity Purified
Conjugation:	Unconjugated
Storage:	Store at -20°C as received.
Stability:	Stable for 12 months from date of receipt.
Predicted Protein Size:	90 kDa
Gene Name:	lysine demethylase 1B
Database Link:	NP_694587 Entrez Gene 221656 Human Q8NB78
Background:	Flavin-dependent histone demethylases, such as KDM1B, regulate histone lysine methylation, an epigenetic mark that regulates gene expression and chromatin function.
Synonyms:	AOF1; bA204B7.3; C6orf193; dj298J15.2; LSD2
Note:	Dog: 100%; Pig: 100%; Rat: 100%; Horse: 100%; Human: 100%; Mouse: 100%; Bovine: 100%; Rabbit: 100%; Guinea pig: 93%



[View online »](#)

Protein Families: Druggable Genome

Product images:



Host: Rabbit; Target Name: KDM1B; Sample Tissue: A549 Whole Cell lysates; Antibody Dilution: 1.0ug/ml