

Product datasheet for **TA331262**

ITIH5 Rabbit Polyclonal Antibody

Product data:

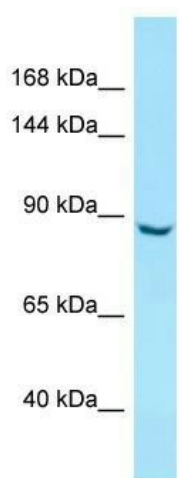
Product Type:	Primary Antibodies
Applications:	WB
Recommended Dilution:	WB
Reactivity:	Human
Host:	Rabbit
Isotype:	IgG
Clonality:	Polyclonal
Immunogen:	The immunogen for Anti-ITIH5 antibody is: synthetic peptide directed towards the N-terminal region of Human ITIH5. Synthetic peptide located within the following region: ASEDQDIEFQMQUIPAAAFITNFTMLIGDKVYQGEITEREKKSGDRVKEKR
Formulation:	Liquid. Purified antibody supplied in 1x PBS buffer with 0.09% (w/v) sodium azide and 2% sucrose. <i>Note that this product is shipped as lyophilized powder to China customers.</i>
Conjugation:	Unconjugated
Storage:	Store at -20°C as received.
Stability:	Stable for 12 months from date of receipt.
Predicted Protein Size:	75 kDa
Gene Name:	inter-alpha-trypsin inhibitor heavy chain family member 5
Database Link:	NP_001001851 Entrez Gene 80760 Human Q86UX2
Background:	This gene encodes a heavy chain component of one of the inter-alpha-trypsin inhibitor (ITI) family members. ITI proteins are involved in extracellular matrix stabilization and in the prevention of tumor metastasis. They are also structurally related plasma serine protease inhibitors and are composed of a light chain and varying numbers of heavy chains. This family member is thought to function as a tumor suppressor in breast and thyroid cancers. Alternative splicing results in multiple transcript variants.
Synonyms:	ITI-HC5; PP14776



[View online »](#)

Note: Human: 100%; Rat: 93%; Rabbit: 92%; Mouse: 86%; Dog: 79%; Pig: 79%; Bovine: 79%; Guinea pig: 79%

Product images:



WB Suggested Anti-ITIH5 Antibody; Titration: 1.0 ug/ml; Positive Control: HepG2 Whole Cell