

Product datasheet for **TA331259**

GPR183 Rabbit Polyclonal Antibody

Product data:

Product Type:	Primary Antibodies
Applications:	WB
Recommended Dilution:	WB
Reactivity:	Human
Host:	Rabbit
Isotype:	IgG
Clonality:	Polyclonal
Immunogen:	The immunogen for Anti-GPR183 antibody is: synthetic peptide directed towards the C-terminal region of Human GPR183. Synthetic peptide located within the following region: SLPWILLGACFIGYVLPILIIILICYSQICCKLFRITAKQNPLTEKSGVNKK
Formulation:	Liquid. Purified antibody supplied in 1x PBS buffer with 0.09% (w/v) sodium azide and 2% sucrose. <i>Note that this product is shipped as lyophilized powder to China customers.</i>
Conjugation:	Unconjugated
Storage:	Store at -20°C as received.
Stability:	Stable for 12 months from date of receipt.
Predicted Protein Size:	41 kDa
Gene Name:	G protein-coupled receptor 183
Database Link:	NP_004942 Entrez Gene 1880 Human P32249
Background:	This gene was identified by the up-regulation of its expression upon Epstein-Barr virus infection of primary B lymphocytes. This gene is predicted to encode a G protein-coupled receptor that is most closely related to the thrombin receptor. Expression of this gene was detected in B-lymphocyte cell lines and lymphoid tissues but not in T-lymphocyte cell lines or peripheral blood T lymphocytes. The function of this gene is unknown.
Synonyms:	EBI2; hEBI2

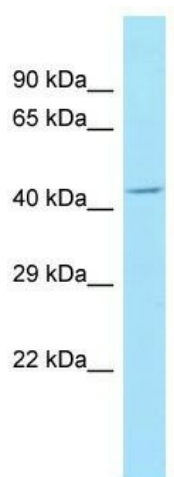


[View online »](#)

Note: Dog: 100%; Pig: 100%; Rat: 100%; Horse: 100%; Human: 100%; Mouse: 100%; Bovine: 100%; Rabbit: 100%; Guinea pig: 93%

Protein Families: Druggable Genome, GPCR, Transmembrane

Product images:



WB Suggested Anti-GPR183 Antibody; Titration: 1.0 ug/ml; Positive Control: 293T Whole Cell