

## Product datasheet for **TA331258**

### GPLD1 Rabbit Polyclonal Antibody

#### Product data:

Product Type:	Primary Antibodies
Applications:	WB
Recommended Dilution:	WB
Reactivity:	Human
Host:	Rabbit
Isotype:	IgG
Clonality:	Polyclonal
Immunogen:	The immunogen for Anti-GPLD1 antibody is: synthetic peptide directed towards the N-terminal region of Human GPLD1. Synthetic peptide located within the following region: GKFHDVSESTHWTPFLNASVHYIRENYPLPWEKDTEKLVAFLEFGITSHMA
Formulation:	Liquid. Purified antibody supplied in 1x PBS buffer with 0.09% (w/v) sodium azide and 2% sucrose. <i>Note that this product is shipped as lyophilized powder to China customers.</i>
Conjugation:	Unconjugated
Storage:	Store at -20°C as received.
Stability:	Stable for 12 months from date of receipt.
Predicted Protein Size:	90 kDa
Gene Name:	glycosylphosphatidylinositol specific phospholipase D1
Database Link:	<a href="#">NP_001494</a> <a href="#">Entrez Gene 2822 Human P80108</a>
Background:	Many proteins are tethered to the extracellular face of eukaryotic plasma membranes by a glycosylphosphatidylinositol (GPI) anchor. The GPI-anchor is a glycolipid found on many blood cells. The protein encoded by this gene is a GPI degrading enzyme. Glycosylphosphatidylinositol specific phospholipase D1 hydrolyzes the inositol phosphate linkage in proteins anchored by phosphatidylinositol glycans, thereby releasing the attached protein from the plasma membrane.
Synonyms:	GPIPLD; GPIPLDM; PIGPLD; PIGPLD1; PLD



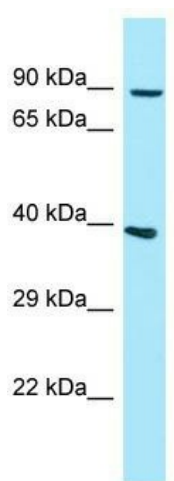
[View online »](#)

**Note:** Rat: 100%; Horse: 100%; Human: 100%; Mouse: 100%; Dog: 93%; Pig: 93%; Rabbit: 93%; Guinea pig: 86%; Bovine: 85%

**Protein Families:** Druggable Genome, Secreted Protein

**Protein Pathways:** Glycosylphosphatidylinositol(GPI)-anchor biosynthesis

**Product images:**



WB Suggested Anti-GPLD1 Antibody; Titration: 1.0 ug/ml; Positive Control: 721\_B Whole Cell. GPLD1 is strongly supported by BioGPS gene expression data to be expressed in Human 721\_B cells