

## Product datasheet for **TA331256**

### G protein alpha 13 (GNA13) Rabbit Polyclonal Antibody

#### Product data:

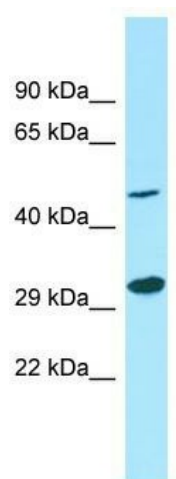
Product Type:	Primary Antibodies
Applications:	WB
Recommended Dilution:	WB
Reactivity:	Human, Mouse
Host:	Rabbit
Isotype:	IgG
Clonality:	Polyclonal
Immunogen:	The immunogen for Anti-GNA13 antibody is: synthetic peptide directed towards the N-terminal region of Human GNA13. Synthetic peptide located within the following region: GCLLTSGAEQQRKSKEIDKCLSREKTYVKRLVKILLGAGESGKSTFLK
Formulation:	Liquid. Purified antibody supplied in 1x PBS buffer with 0.09% (w/v) sodium azide and 2% sucrose. <i>Note that this product is shipped as lyophilized powder to China customers.</i>
Conjugation:	Unconjugated
Storage:	Store at -20°C as received.
Stability:	Stable for 12 months from date of receipt.
Predicted Protein Size:	44 kDa
Gene Name:	G protein subunit alpha 13
Database Link:	<a href="#">NP_006563</a> <a href="#">Entrez Gene 14674 Mouse</a> <a href="#">Entrez Gene 10672 Human</a> <a href="#">Q14344</a>
Background:	Guanine nucleotide-binding proteins (G proteins) are involved as modulators or transducers in various transmembrane signaling systems.
Synonyms:	G13
Note:	Pig: 100%; Rat: 100%; Human: 100%; Mouse: 100%; Rabbit: 100%; Guinea pig: 100%; Zebrafish: 83%
Protein Families:	Druggable Genome



[View online »](#)

Protein Pathways: Long-term depression, Regulation of actin cytoskeleton, Vascular smooth muscle contraction

**Product images:**



WB Suggested Anti-GNA13 Antibody; Titration:  
1.0 ug/ml; Positive Control: COLO205 Whole Cell