

Product datasheet for TA331255

Bicra Rabbit Polyclonal Antibody

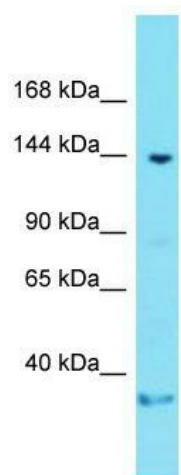
Product data:

Product Type:	Primary Antibodies
Applications:	WB
Recommended Dilution:	WB
Reactivity:	Mouse, Human
Host:	Rabbit
Isotype:	IgG
Clonality:	Polyclonal
Immunogen:	The immunogen for Anti-Gltscr1 antibody is: synthetic peptide directed towards the C-terminal region of Mouse Gltscr1. Synthetic peptide located within the following region: FIQEEKTTLALDKQLAKEKPD EYVSSSRSLGFPVPSSEGHRLPSHGQSS
Formulation:	Liquid. Purified antibody supplied in 1x PBS buffer with 0.09% (w/v) sodium azide and 2% sucrose. <i>Note that this product is shipped as lyophilized powder to China customers.</i>
Conjugation:	Unconjugated
Storage:	Store at -20°C as received.
Stability:	Stable for 12 months from date of receipt.
Predicted Protein Size:	161 kDa
Gene Name:	glioma tumor suppressor candidate region gene 1
Database Link:	NP_001074887 Entrez Gene 29998 Human Entrez Gene 243842 Mouse F8VPZ9
Background:	The function of this protein remains unknown.
Synonyms:	GLTSCR1
Note:	Dog: 100%; Pig: 100%; Rat: 100%; Human: 100%; Mouse: 100%; Bovine: 100%; Guinea pig: 100%



[View online »](#)

Product images:



Host: Rabbit; Target Name: Gltscr1; Sample
Tissue: Mouse Brain lysates; Antibody Dilution:
1.0ug/ml