

Product datasheet for **TA331253**

FLVCR2 Rabbit Polyclonal Antibody

Product data:

Product Type:	Primary Antibodies
Applications:	WB
Recommended Dilution:	WB
Reactivity:	Human
Host:	Rabbit
Isotype:	IgG
Clonality:	Polyclonal
Immunogen:	The immunogen for Anti-FLVCR2 antibody is: synthetic peptide directed towards the C-terminal region of Human FLVCR2. Synthetic peptide located within the following region: TLLNRMVIWHYPGEEVNAGRIGLTIVIAGMLGAVISGIWLDRSKYKETT
Formulation:	Liquid. Purified antibody supplied in 1x PBS buffer with 0.09% (w/v) sodium azide and 2% sucrose.
Conjugation:	Unconjugated
Storage:	Store at -20°C as received.
Stability:	Stable for 12 months from date of receipt.
Predicted Protein Size:	57 kDa
Gene Name:	feline leukemia virus subgroup C cellular receptor family member 2
Database Link:	NP_060261 Entrez Gene 55640 Human Q9UPI3
Background:	This gene encodes a member of the major facilitator superfamily. The encoded transmembrane protein is a calcium transporter. Unlike the related protein feline leukemia virus subgroup C receptor 1, the protein encoded by this locus does not bind to feline leukemia virus subgroup C envelope protein. The encoded protein may play a role in development of brain vascular endothelial cells, as mutations at this locus have been associated with proliferative vasculopathy and hydranencephaly-hydrocephaly syndrome. Alternatively spliced transcript variants have been described.
Synonyms:	C14orf58; CCT; EPV; FLVCRL14q; MFSD7C; PVHH

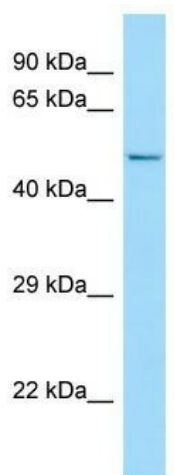


[View online »](#)

Note: Dog: 100%; Human: 100%; Pig: 93%; Rat: 93%; Mouse: 93%; Bovine: 93%; Rabbit: 93%; Zebrafish: 93%; Guinea pig: 93%; Horse: 86%

Protein Families: Transmembrane

Product images:



WB Suggested Anti-FLVCR2 Antibody; Titration: 1.0 ug/ml; Positive Control: HT1080 Whole Cell