

Product datasheet for **TA331251**

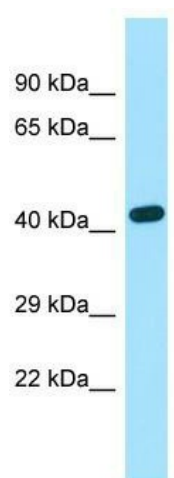
EXOC3L2 Rabbit Polyclonal Antibody

Product data:

Product Type:	Primary Antibodies
Applications:	WB
Recommended Dilution:	WB
Reactivity:	Human
Host:	Rabbit
Isotype:	IgG
Clonality:	Polyclonal
Immunogen:	The immunogen for Anti-EXOC3L2 antibody is: synthetic peptide directed towards the C-terminal region of Human EXOC3L2. Synthetic peptide located within the following region: GAQALALRRMQDEPYQALVAELHRRALVEYVRPLLGRGLRCSSARTSRV
Formulation:	Liquid. Purified antibody supplied in 1x PBS buffer with 0.09% (w/v) sodium azide and 2% sucrose. <i>Note that this product is shipped as lyophilized powder to China customers.</i>
Conjugation:	Unconjugated
Storage:	Store at -20°C as received.
Stability:	Stable for 12 months from date of receipt.
Predicted Protein Size:	46 kDa
Gene Name:	exocyst complex component 3-like 2
Database Link:	NP_612635 Entrez Gene 90332 Human Q2M3D2
Background:	The function of this protein remains unknown.
Synonyms:	XTP7
Note:	Dog: 100%; Rat: 100%; Human: 100%; Bovine: 100%; Pig: 93%; Mouse: 93%; Guinea pig: 93%



[View online »](#)

Product images:

WB Suggested Anti-EXOC3L2 Antibody; Titration:
1.0 ug/ml; Positive Control: Fetal Lung