

## Product datasheet for **TA331249**

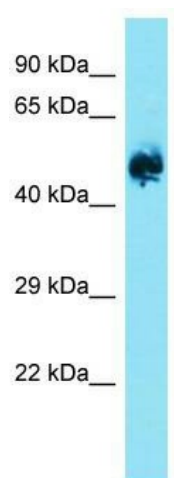
### Eif2b3 Rabbit Polyclonal Antibody

#### Product data:

Product Type:	Primary Antibodies
Applications:	WB
Recommended Dilution:	WB
Reactivity:	Rat
Host:	Rabbit
Isotype:	IgG
Clonality:	Polyclonal
Immunogen:	The immunogen for Anti-Eif2b3 antibody is: synthetic peptide directed towards the middle region of Rat Eif2b3. Synthetic peptide located within the following region: FRAYDASLAMLMRKGQESTEPVPGQKGKKKTVEQRDFIGVDSTGKRLLFM
Formulation:	Liquid. Purified antibody supplied in 1x PBS buffer with 0.09% (w/v) sodium azide and 2% sucrose. <i>Note that this product is shipped as lyophilized powder to China customers.</i>
Conjugation:	Unconjugated
Storage:	Store at -20°C as received.
Stability:	Stable for 12 months from date of receipt.
Predicted Protein Size:	50 kDa
Gene Name:	eukaryotic translation initiation factor 2B, subunit 3 gamma
Database Link:	<a href="#">NP_598293</a> <a href="#">Entrez Gene 171145 Rat P70541</a>
Background:	Eif2b3 is a guanine nucleotide exchange factor that regulates key step in protein synthesis; restores eIF2 to its active GTP-bound state.
Synonyms:	EIF-2B; EIF2Bgamma
Note:	Dog: 100%; Pig: 100%; Horse: 100%; Human: 100%; Bovine: 100%; Rabbit: 100%; Rat: 93%; Mouse: 93%; Zebrafish: 93%; Guinea pig: 93%



[View online »](#)

**Product images:**

Host: Rabbit; Target Name: Eif2b3; Sample  
Tissue: Rat Brain lysates; Antibody Dilution:  
1.0ug/ml