

Product datasheet for TA331248

EIF2B3 Rabbit Polyclonal Antibody

Product data:

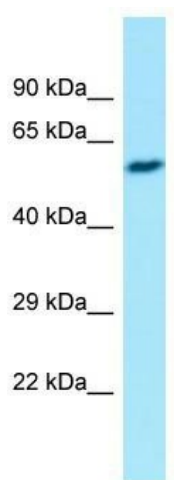
Product Type:	Primary Antibodies
Applications:	WB
Recommended Dilution:	WB
Reactivity:	Human
Host:	Rabbit
Isotype:	IgG
Clonality:	Polyclonal
Immunogen:	The immunogen for Anti-EIF2B3 antibody is: synthetic peptide directed towards the middle region of Human EIF2B3. Synthetic peptide located within the following region: ENGSI S IRSELIPYLVRKQFSSASSQQGQEEKEEDLKKKELKSLDIYSF
Formulation:	Liquid. Purified antibody supplied in 1x PBS buffer with 0.09% (w/v) sodium azide and 2% sucrose. <i>Note that this product is shipped as lyophilized powder to China customers.</i>
Conjugation:	Unconjugated
Storage:	Store at -20°C as received.
Stability:	Stable for 12 months from date of receipt.
Predicted Protein Size:	50 kDa
Gene Name:	eukaryotic translation initiation factor 2B subunit gamma
Database Link:	NP_065098 Entrez Gene 8891 Human Q9NR50
Background:	The protein encoded by this gene is one of the subunits of initiation factor eIF2B, which catalyzes the exchange of eukaryotic initiation factor 2-bound GDP for GTP. It has also been found to function as a cofactor of hepatitis C virus internal ribosome entry site-mediated translation. Mutations in this gene have been associated with leukodystrophy with vanishing white matter. Alternatively spliced transcript variants encoding different isoforms have been found for this gene.
Synonyms:	EIF-2B; EIF2Bgamma



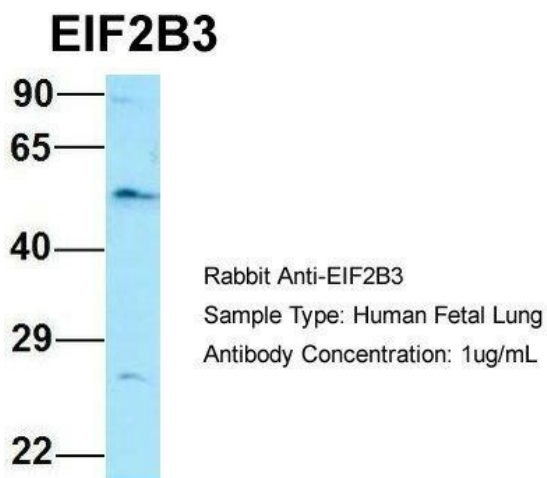
[View online »](#)

Note: Horse: 100%; Human: 100%; Bovine: 100%; Dog: 93%; Pig: 93%; Rat: 93%; Rabbit: 93%; Guinea pig: 93%; Yeast: 90%; Mouse: 86%

Product images:



WB Suggested Anti-EIF2B3 Antibody; Titration: 1.0 ug/ml; Positive Control: Fetal Liver



Host: Rabbit; Target Name: EIF2B3; Sample Tissue: Human Fetal Lung; Antibody Dilution: 1.0ug/ml