

Product datasheet for **TA331246**

CCDC80 Rabbit Polyclonal Antibody

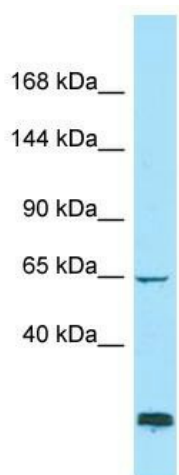
Product data:

Product Type:	Primary Antibodies
Applications:	WB
Recommended Dilution:	WB
Reactivity:	Human
Host:	Rabbit
Isotype:	IgG
Clonality:	Polyclonal
Immunogen:	The immunogen for Anti-CCDC80 antibody is: synthetic peptide directed towards the C-terminal region of Human CCDC80. Synthetic peptide located within the following region: LRVKQYYEVPITMKSVFDLIDTFQSRIKDMEKQKKEGIVCKEDKKQSLEN
Formulation:	Liquid. Purified antibody supplied in 1x PBS buffer with 0.09% (w/v) sodium azide and 2% sucrose. <i>Note that this product is shipped as lyophilized powder to China customers.</i>
Purification:	Affinity Purified
Conjugation:	Unconjugated
Storage:	Store at -20°C as received.
Stability:	Stable for 12 months from date of receipt.
Predicted Protein Size:	60 kDa
Gene Name:	coiled-coil domain containing 80
Database Link:	NP_955805 Entrez Gene 151887 Human Q76M96
Background:	The function of this protein remains unknown.
Synonyms:	DRO1; okuribin; SSG1; URB
Note:	Dog: 100%; Pig: 100%; Rat: 100%; Horse: 100%; Human: 100%; Rabbit: 93%; Guinea pig: 93%; Mouse: 86%; Sheep: 86%; Bovine: 86%



[View online »](#)

Product images:



Host: Rabbit

Target Name: CCDC80

Sample Tissue: RPMI-8226 Cell Lysate

Antibody Dilution: 1.0 μ g/ml

Host: Rabbit; Target Name: CCDC80; Sample Tissue: RPMI-8226 Whole Cell lysates; Antibody Dilution: 1.0ug/ml