

Product datasheet for TA331245

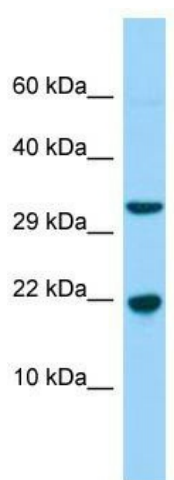
CABP5 Rabbit Polyclonal Antibody

Product data:

Product Type:	Primary Antibodies
Applications:	WB
Recommended Dilution:	WB
Reactivity:	Human
Host:	Rabbit
Isotype:	IgG
Clonality:	Polyclonal
Immunogen:	The immunogen for Anti-CABP5 antibody is: synthetic peptide directed towards the N-terminal region of Human CABP5. Synthetic peptide located within the following region: RKGIAEKQRRERPLGQDEIEELREAFLEFDKDRDGFISCKDLGNLMRTMGY
Formulation:	Liquid. Purified antibody supplied in 1x PBS buffer with 0.09% (w/v) sodium azide and 2% sucrose.
Conjugation:	Unconjugated
Storage:	Store at -20°C as received.
Stability:	Stable for 12 months from date of receipt.
Predicted Protein Size:	20 kDa
Gene Name:	calcium binding protein 5
Database Link:	NP_062829 Entrez Gene 56344 Human Q9NP86
Background:	The product of this gene belongs to a subfamily of calcium binding proteins, which share similarity to calmodulin. Calcium binding proteins are an important component of calcium mediated cellular signal transduction. Expression of this gene is retina-specific. The mouse homolog of this protein has been shown to express in the inner nuclear layer of the retina, suggested its role in neuronal functioning. The specific function of this gene is unknown.
Synonyms:	CABP3
Note:	Dog: 100%; Pig: 100%; Horse: 100%; Human: 100%; Bovine: 100%; Rat: 93%; Rabbit: 93%; Guinea pig: 93%; Zebrafish: 92%; Mouse: 86%


[View online »](#)

Product images:



WB Suggested Anti-CABP5 Antibody; Titration: 1.0 ug/ml; Positive Control: Fetal Liver