

## Product datasheet for **TA331243**

### Ap1s1 Rabbit Polyclonal Antibody

#### Product data:

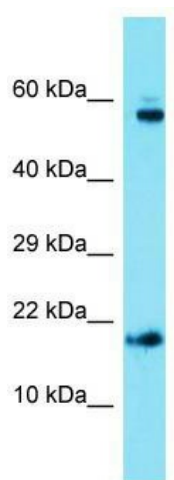
Product Type:	Primary Antibodies
Applications:	WB
Recommended Dilution:	WB
Reactivity:	Mouse
Host:	Rabbit
Isotype:	IgG
Clonality:	Polyclonal
Immunogen:	The immunogen for Anti-Ap1s1 antibody is: synthetic peptide directed towards the C-terminal region of Mouse Ap1s1. Synthetic peptide located within the following region: VCELDIIFNFEKAYFILDEFMGGDVQDTSKKSVLKAIQADLLQEEDS
Formulation:	Liquid. Purified antibody supplied in 1x PBS buffer with 0.09% (w/v) sodium azide and 2% sucrose. <i>Note that this product is shipped as lyophilized powder to China customers.</i>
Conjugation:	Unconjugated
Storage:	Store at -20°C as received.
Stability:	Stable for 12 months from date of receipt.
Predicted Protein Size:	19 kDa
Gene Name:	adaptor protein complex AP-1, sigma 1
Database Link:	<a href="#">NP_031483</a> <a href="#">Entrez Gene 11769 Mouse P61967</a>
Background:	Ap1s1 is a subunit of clathrin-associated adaptor protein complex 1 that plays a role in protein sorting in the late-Golgi/trans-Golgi network (TGN) and/or endosomes. The AP complexes mediate both the recruitment of clathrin to membranes and the recognition of sorting signals within the cytosolic tails of transmembrane cargo molecules.
Synonyms:	AP19; CLAPS1; FLJ92436; OTTHUMP00000211468; SIGMA1A; Sigma1A-adaptin; WUGSC:H_DJ0747G18.2



[View online »](#)

**Note:** Dog: 100%; Pig: 100%; Rat: 100%; Goat: 100%; Horse: 100%; Human: 100%; Mouse: 100%; Bovine: 100%; Rabbit: 100%; Guinea pig: 100%; Zebrafish: 86%

### Product images:



Host: Rabbit; Target Name: Ap1s1; Sample Tissue: Mouse Heart lysates; Antibody Dilution: 1.0ug/ml