

## Product datasheet for **TA331242**

### ADI1 Rabbit Polyclonal Antibody

#### Product data:

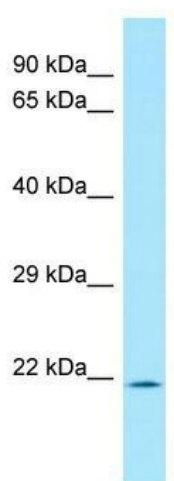
Product Type:	Primary Antibodies
Applications:	WB
Recommended Dilution:	WB
Reactivity:	Human
Host:	Rabbit
Isotype:	IgG
Clonality:	Polyclonal
Immunogen:	The immunogen for Anti-ADI1 antibody is: synthetic peptide directed towards the middle region of Human ADI1. Synthetic peptide located within the following region: DKLPNYEEKIKMFYEEHLHLDDEIRYILDGSGYFDVRDKEDQWIRIFMEK
Formulation:	Liquid. Purified antibody supplied in 1x PBS buffer with 0.09% (w/v) sodium azide and 2% sucrose. <i>Note that this product is shipped as lyophilized powder to China customers.</i>
Conjugation:	Unconjugated
Storage:	Store at -20°C as received.
Stability:	Stable for 12 months from date of receipt.
Predicted Protein Size:	21 kDa
Gene Name:	acireductone dioxygenase 1
Database Link:	<a href="#">NP_060739</a> <a href="#">Entrez Gene 55256 Human Q9BV57</a>
Background:	This gene encodes an enzyme that belongs to the aci-reductone dioxygenase family of metal-binding enzymes, which are involved in methionine salvage. This enzyme may regulate mRNA processing in the nucleus, and may carry out different functions depending on its localization. Related pseudogenes have been defined on chromosomes 8 and 20.
Synonyms:	APL1; ARD; Fe-ARD; HMFT1638; MTCBP1; mtnD; Ni-ARD; SIPL
Note:	Human: 100%; Rat: 93%; Horse: 93%; Mouse: 93%; Pig: 86%; Bovine: 86%; Rabbit: 86%; Guinea pig: 86%; Dog: 79%; Goat: 79%; Yeast: 79%



[View online »](#)

Protein Pathways: Cysteine and methionine metabolism, Metabolic pathways

### Product images:



WB Suggested Anti-ADI1 Antibody; Titration: 1.0 ug/ml; Positive Control: Hela Whole cellADI1 is supported by BioGPS gene expression data to be expressed in HeLa