

## Product datasheet for **TA331240**

### WHAMM Rabbit Polyclonal Antibody

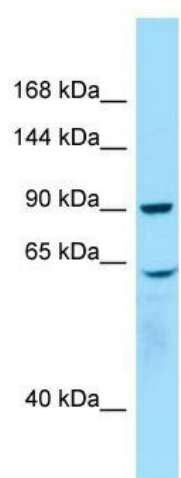
#### Product data:

Product Type:	Primary Antibodies
Applications:	WB
Recommended Dilution:	WB
Reactivity:	Human
Host:	Rabbit
Isotype:	IgG
Clonality:	Polyclonal
Immunogen:	The immunogen for Anti-WHAMM antibody is: synthetic peptide directed towards the C-terminal region of Human WHAMM. Synthetic peptide located within the following region: SEAGNVKSPKCQNCHGNIPVQVFVPGDQTHSKSSEELSLPPPPPPPPP
Formulation:	Liquid. Purified antibody supplied in 1x PBS buffer with 0.09% (w/v) sodium azide and 2% sucrose. <i>Note that this product is shipped as lyophilized powder to China customers.</i>
Conjugation:	Unconjugated
Storage:	Store at -20°C as received.
Stability:	Stable for 12 months from date of receipt.
Predicted Protein Size:	91 kDa
Gene Name:	WAS protein homolog associated with actin, golgi membranes and microtubules
Database Link:	<a href="#">NP_001073904</a> <a href="#">Entrez Gene 123720 Human</a> <a href="#">Q8TF30</a>
Background:	WHAMM acts as a nucleation-promoting factor (NPF) that stimulates Arp2/3-mediated actin polymerization both at the Golgi apparatus and along tubular membranes. WHAMM is involved as a regulator of Golgi positioning and morphology. WHAMM participates in vesicle transport between the reticulum endoplasmic and the Golgi complex.
Synonyms:	WHAMM1; WHDC1
Note:	Human: 100%; Horse: 93%; Dog: 86%; Pig: 86%; Rat: 85%



[View online »](#)

## Product images:



WB Suggested Anti-WHAMM Antibody; Titration:  
1.0 ug/ml; Positive Control: Placenta