

Product datasheet for **TA331239**

UQCC (UQCC1) Rabbit Polyclonal Antibody

Product data:

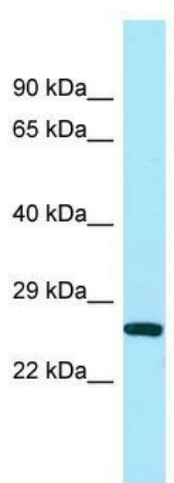
Product Type:	Primary Antibodies
Applications:	WB
Recommended Dilution:	WB
Reactivity:	Human
Host:	Rabbit
Isotype:	IgG
Clonality:	Polyclonal
Immunogen:	The immunogen for Anti-UQCC antibody is: synthetic peptide directed towards the N-terminal region of Human UQCC. Synthetic peptide located within the following region: RCQMPDTFNSWFLITLLHVWMCLVRMKQEGRSGKYMCRIVHFMWEDVQQ
Formulation:	Liquid. Purified antibody supplied in 1x PBS buffer with 0.09% (w/v) sodium azide and 2% sucrose. <i>Note that this product is shipped as lyophilized powder to China customers.</i>
Conjugation:	Unconjugated
Storage:	Store at -20°C as received.
Stability:	Stable for 12 months from date of receipt.
Predicted Protein Size:	27 kDa
Gene Name:	ubiquinol-cytochrome c reductase complex assembly factor 1
Database Link:	NP_001171906 Entrez Gene 55245 Human Q9NVA1
Background:	This gene encodes a transmembrane protein that is structurally similar to the mouse basic fibroblast growth factor repressed ZIC-binding protein. In mouse this protein may be involved in fibroblast growth factor regulated growth control. In humans, polymorphisms in this gene are associated with variation in human height and osteoarthritis. Alternate splicing results in multiple transcript variants.
Synonyms:	BFZB; C20orf44; CBP3; UQCC



[View online »](#)

Note: Dog: 100%; Pig: 100%; Rat: 100%; Horse: 100%; Human: 100%; Bovine: 100%; Rabbit: 100%; Guinea pig: 100%; Mouse: 93%; Zebrafish: 86%

Product images:



WB Suggested Anti-UQCC Antibody; Titration: 1.0 ug/ml; Positive Control: Placenta