

## Product datasheet for **TA331238**

### Tropomodulin 4 (TMOD4) Rabbit Polyclonal Antibody

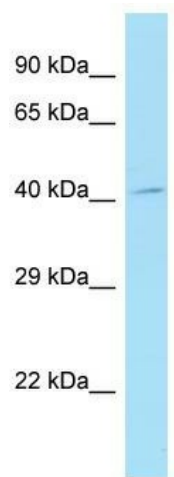
#### Product data:

Product Type:	Primary Antibodies
Applications:	WB
Recommended Dilution:	WB
Reactivity:	Human
Host:	Rabbit
Isotype:	IgG
Clonality:	Polyclonal
Immunogen:	The immunogen for Anti-TMOD4 antibody is: synthetic peptide directed towards the N-terminal region of Human TMOD4. Synthetic peptide located within the following region: PEELEQLDCELQEMDPENMLLPAGLRQRDQTKKSPTGPLDREALLQYLEQ
Formulation:	Liquid. Purified antibody supplied in 1x PBS buffer with 0.09% (w/v) sodium azide and 2% sucrose.
Conjugation:	Unconjugated
Storage:	Store at -20°C as received.
Stability:	Stable for 12 months from date of receipt.
Predicted Protein Size:	39 kDa
Gene Name:	tropomodulin 4
Database Link:	<a href="#">NP_037485</a> <a href="#">Entrez Gene 29765 Human</a> <a href="#">Q9NZQ9</a>
Background:	TMOD4 blocks the elongation and depolymerization of the actin filaments at the pointed end. The Tmod/TM complex contributes to the formation of the short actin protofilament, which in turn defines the geometry of the membrane skeleton.
Synonyms:	SK-TMOD
Note:	Dog: 100%; Pig: 100%; Rat: 100%; Horse: 100%; Human: 100%; Mouse: 100%; Bovine: 100%; Rabbit: 100%; Zebrafish: 100%; Guinea pig: 100%



[View online »](#)

## Product images:



WB Suggested Anti-TMOD4 Antibody; Titration:  
1.0 ug/ml; Positive Control: HT1080 Whole Cell