

## Product datasheet for **TA331236**

### TBC1D3 Rabbit Polyclonal Antibody

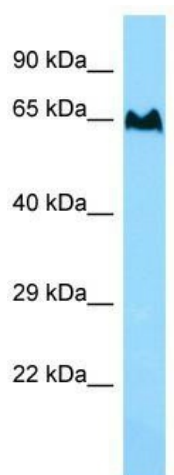
#### Product data:

Product Type:	Primary Antibodies
Applications:	WB
Recommended Dilution:	WB
Reactivity:	Human
Host:	Rabbit
Isotype:	IgG
Clonality:	Polyclonal
Immunogen:	The immunogen for Anti-TBC1D3 antibody is: synthetic peptide directed towards the C-terminal region of Human TBC1D3. Synthetic peptide located within the following region: NRFVDTWARDEDTV LKHLRASMKKLTRKQGDLPPPAKPEQGSSASRPVPA
Formulation:	Liquid. Purified antibody supplied in 1x PBS buffer with 0.09% (w/v) sodium azide and 2% sucrose. <i>Note that this product is shipped as lyophilized powder to China customers.</i>
Conjugation:	Unconjugated
Storage:	Store at -20°C as received.
Stability:	Stable for 12 months from date of receipt.
Predicted Protein Size:	60 kDa
Gene Name:	TBC1 domain family member 3
Database Link:	<a href="#">NP_001116863</a> <a href="#">Entrez Gene 729873 Human</a> <a href="#">Q8IZP1</a>
Background:	TBC1D3 acts as a GTPase activating protein for RAB5. TBC1D3 does not act on RAB4 or RAB11.
Synonyms:	PRC17; TBC1D3A; TBC1D3F
Note:	Human: 100%

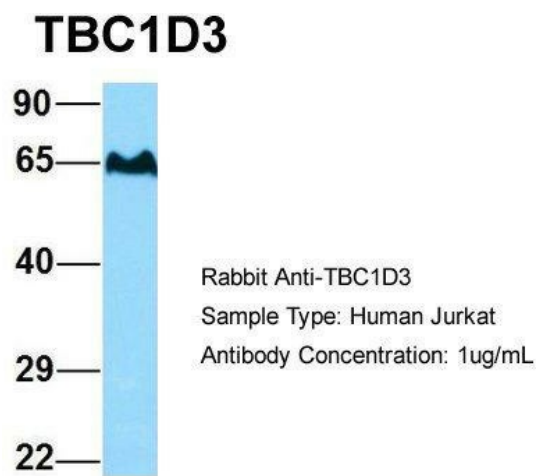


[View online »](#)

Product images:

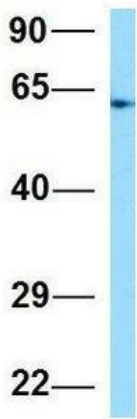


WB Suggested Anti-TBC1D3 Antibody; Titration: 1.0 ug/ml; Positive Control: MCF7 Whole Cell



Host: Rabbit; Target Name: TBC1D3; Sample Tissue: Human Jurkat; Antibody Dilution: 1.0ug/ml; TBC1D3 is supported by BioGPS gene expression data to be expressed in Jurkat

## TBC1D3



Rabbit Anti-TBC1D3  
Sample Type: Human 293T  
Antibody Concentration: 1ug/mL

Host: Rabbit; Target Name: TBC1D3; Sample  
Tissue: Human 293T; Antibody Dilution: 1.0ug/ml;  
TBC1D3 is supported by BioGPS gene expression  
data to be expressed in HEK293T