

## Product datasheet for **TA331235**

### TAS2R16 Rabbit Polyclonal Antibody

#### Product data:

Product Type:	Primary Antibodies
Applications:	WB
Recommended Dilution:	WB
Reactivity:	Human
Host:	Rabbit
Isotype:	IgG
Clonality:	Polyclonal
Immunogen:	The immunogen for Anti-TAS2R16 antibody is: synthetic peptide directed towards the C-terminal region of Human TAS2R16. Synthetic peptide located within the following region: TILITIIGTLFDKRCWLWVWEAFVYAFILMHSTLMLSSPTLKRLKGGK
Formulation:	Liquid. Purified antibody supplied in 1x PBS buffer with 0.09% (w/v) sodium azide and 2% sucrose.
Conjugation:	Unconjugated
Storage:	Store at -20°C as received.
Stability:	Stable for 12 months from date of receipt.
Predicted Protein Size:	34 kDa
Gene Name:	taste 2 receptor member 16
Database Link:	<a href="#">NP_058641</a> <a href="#">Entrez Gene 50833 Human</a> <a href="#">Q9NYV7</a>
Background:	This gene encodes a member of a family of candidate taste receptors that are members of the G protein-coupled receptor superfamily. These family members are specifically expressed by taste receptor cells of the tongue and palate epithelia. Each of these apparently intronless genes encodes a 7-transmembrane receptor protein, functioning as a bitter taste receptor. This gene is clustered with another 3 candidate taste receptor genes in chromosome 7 and is genetically linked to loci that influence bitter perception.
Synonyms:	T2R16
Note:	Human: 100%; Rabbit: 86%

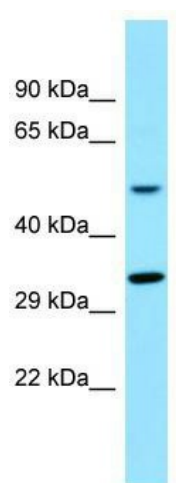


[View online »](#)

Protein Families: Druggable Genome, Transmembrane

Protein Pathways: Taste transduction

### Product images:



WB Suggested Anti-TAS2R16 Antibody; Titration:  
1.0 ug/ml; Positive Control: Placenta