

Product datasheet for **TA331234**

SYNRG Rabbit Polyclonal Antibody

Product data:

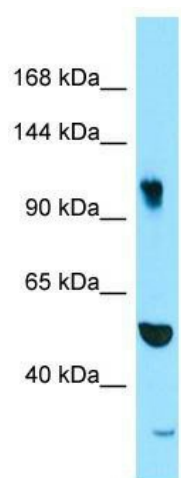
Product Type:	Primary Antibodies
Applications:	WB
Recommended Dilution:	WB
Reactivity:	Human
Host:	Rabbit
Isotype:	IgG
Clonality:	Polyclonal
Immunogen:	The immunogen for Anti-SYNRG antibody is: synthetic peptide directed towards the N-terminal region of Human SYNRG. Synthetic peptide located within the following region: QQKLLLEERKRRQFEEQKQLRLLSSVKPKTGEKSRDDALEAIKGNLDGF
Formulation:	Liquid. Purified antibody supplied in 1x PBS buffer with 0.09% (w/v) sodium azide and 2% sucrose. <i>Note that this product is shipped as lyophilized powder to China customers.</i>
Conjugation:	Unconjugated
Storage:	Store at -20°C as received.
Stability:	Stable for 12 months from date of receipt.
Predicted Protein Size:	119 kDa
Gene Name:	synergin, gamma
Database Link:	NP_001157019 Entrez Gene 11276 Human Q9UMZ2
Background:	This gene encodes a protein that interacts with the gamma subunit of AP1 clathrin-adaptor complex. The AP1 complex is located at the trans-Golgi network and associates specific proteins with clathrin-coated vesicles. This encoded protein may act to connect the AP1 complex to other proteins. Alternatively spliced transcript variants that encode different isoforms have been described for this gene.
Synonyms:	AP1GBP1; SYNG



[View online »](#)

Note: Dog: 100%; Pig: 100%; Rat: 100%; Horse: 100%; Human: 100%; Bovine: 100%; Rabbit: 100%; Zebrafish: 100%; Mouse: 93%; Guinea pig: 93%

Product images:



WB Suggested Anti-SYNRG Antibody; Titration: 1.0 ug/ml; Positive Control: PANC1 Whole Cell