

Product datasheet for **TA331233**

STK33 Rabbit Polyclonal Antibody

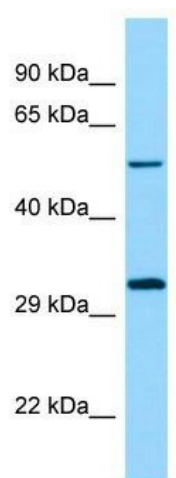
Product data:

Product Type:	Primary Antibodies
Applications:	WB
Recommended Dilution:	WB
Reactivity:	Human
Host:	Rabbit
Isotype:	IgG
Clonality:	Polyclonal
Immunogen:	The immunogen for Anti-STK33 antibody is: synthetic peptide directed towards the N-terminal region of Human STK33. Synthetic peptide located within the following region: VPPVLVEMSQTSSIGSAESLISLERKKEKNINRDITSRKDLPSRTSNVE
Formulation:	Liquid. Purified antibody supplied in 1x PBS buffer with 0.09% (w/v) sodium azide and 2% sucrose. <i>Note that this product is shipped as lyophilized powder to China customers.</i>
Conjugation:	Unconjugated
Storage:	Store at -20°C as received.
Stability:	Stable for 12 months from date of receipt.
Predicted Protein Size:	58 kDa
Gene Name:	serine/threonine kinase 33
Database Link:	NP_112168 Entrez Gene 65975 Human Q9BYT3
Background:	STK33 is a serine/threonine protein kinase which phosphorylates VIME. STK33 may play a specific role in the dynamic behavior of the intermediate filament cytoskeleton by phosphorylation of VIME By similarity. STK33 is not essential for the survival of KRAS-dependent AML cell lines.
Synonyms:	OTTHUMP00000178934; OTTHUMP00000178935; serine; threonine kinase 33
Note:	Human: 100%
Protein Families:	Druggable Genome, Protein Kinase



[View online »](#)

Product images:



WB Suggested Anti-STK33 Antibody; Titration: 1.0 ug/ml; Positive Control: MCF7 Whole Cell