

Product datasheet for **TA331232**

STK33 Rabbit Polyclonal Antibody

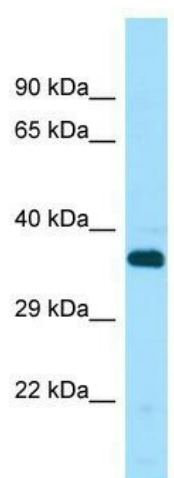
Product data:

| | |
|-------------------------|---|
| Product Type: | Primary Antibodies |
| Applications: | WB |
| Recommended Dilution: | WB |
| Reactivity: | Human |
| Host: | Rabbit |
| Isotype: | IgG |
| Clonality: | Polyclonal |
| Immunogen: | The immunogen for Anti-STK33 antibody is: synthetic peptide directed towards the C-terminal region of Human STK33. Synthetic peptide located within the following region: NVLEMMKEWKNNPESVEENTTEEKKNKPSTEEKLKSYPWGNVDPANYTSD |
| Formulation: | Liquid. Purified antibody supplied in 1x PBS buffer with 0.09% (w/v) sodium azide and 2% sucrose. <i>Note that this product is shipped as lyophilized powder to China customers.</i> |
| Purification: | Affinity Purified |
| Conjugation: | Unconjugated |
| Storage: | Store at -20°C as received. |
| Stability: | Stable for 12 months from date of receipt. |
| Predicted Protein Size: | 35 kDa |
| Gene Name: | serine/threonine kinase 33 |
| Database Link: | NP_112168 Entrez Gene 65975 Human Q9BYT3 |
| Background: | The function of this protein remains unknown. |
| Synonyms: | OTTHUMP00000178934; OTTHUMP00000178935; serine; threonine kinase 33 |
| Note: | Human: 100% |
| Protein Families: | Druggable Genome, Protein Kinase |



[View online »](#)

Product images:



Host: Rabbit; Target Name: STK33; Sample
Tissue: THP-1 Whole Cell lysates; Antibody
Dilution: 1.0ug/ml