

## Product datasheet for **TA331231**

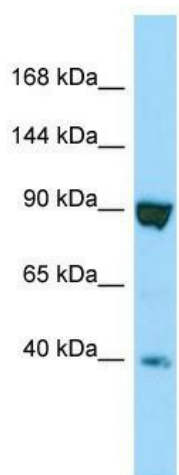
### ITPRID2 Rabbit Polyclonal Antibody

#### Product data:

Product Type:	Primary Antibodies
Applications:	WB
Recommended Dilution:	WB
Reactivity:	Human
Host:	Rabbit
Isotype:	IgG
Clonality:	Polyclonal
Immunogen:	The immunogen for Anti-SSFA2 antibody is: synthetic peptide directed towards the C-terminal region of Human SSFA2. Synthetic peptide located within the following region: VDAAEGAPEVVGPKSEVEEGHGKLPSPMPAAEEMHKNVEQDELQQVIREIK
Formulation:	Liquid. Purified antibody supplied in 1x PBS buffer with 0.09% (w/v) sodium azide and 2% sucrose. <i>Note that this product is shipped as lyophilized powder to China customers.</i>
Purification:	Affinity Purified
Conjugation:	Unconjugated
Storage:	Store at -20°C as received.
Stability:	Stable for 12 months from date of receipt.
Predicted Protein Size:	84 kDa
Gene Name:	sperm specific antigen 2
Database Link:	<a href="#">NP_006742</a> <a href="#">Entrez Gene 6744 Human</a> <a href="#">P28290</a>
Background:	The function of this protein remains unknown.
Synonyms:	CS-1; CS1; KRAP; SPAG13
Note:	Human: 100%; Dog: 92%; Horse: 91%; Pig: 85%; Bovine: 85%



[View online »](#)

**Product images:**

Host: Rabbit; Target Name: SSFA2; Sample  
Tissue: HT1080 Whole Cell lysates; Antibody  
Dilution: 1.0ug/ml