

## Product datasheet for **TA331230**

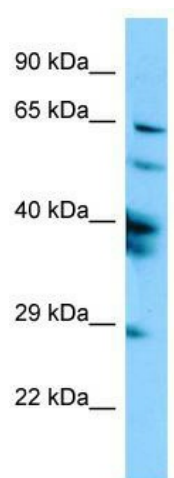
### SPAG16 Rabbit Polyclonal Antibody

#### Product data:

Product Type:	Primary Antibodies
Applications:	WB
Recommended Dilution:	WB
Reactivity:	Human
Host:	Rabbit
Isotype:	IgG
Clonality:	Polyclonal
Immunogen:	The immunogen for Anti-SPAG16 antibody is: synthetic peptide directed towards the N-terminal region of Human SPAG16. Synthetic peptide located within the following region: LENENKNLKKDLKHYKQAADKAREDLLKIQKERDFHRMHHKRIVQEKNKL
Formulation:	Liquid. Purified antibody supplied in 1x PBS buffer with 0.09% (w/v) sodium azide and 2% sucrose. <i>Note that this product is shipped as lyophilized powder to China customers.</i>
Purification:	Affinity Purified
Conjugation:	Unconjugated
Storage:	Store at -20°C as received.
Stability:	Stable for 12 months from date of receipt.
Predicted Protein Size:	71 kDa
Gene Name:	sperm associated antigen 16
Database Link:	<a href="#">NP_078808</a> <a href="#">Entrez Gene 79582 Human</a> <a href="#">Q8N0X2</a>
Background:	Cilia and flagella are comprised of a microtubular backbone, the axoneme, which is organized by the basal body and surrounded by plasma membrane. SPAG16 encodes 2 major proteins that associate with the axoneme of sperm tail and the nucleus of postmeiotic germ cells, respectively.
Synonyms:	PF20; WDR29
Note:	Pig: 100%; Horse: 100%; Human: 100%; Bovine: 100%; Dog: 93%; Mouse: 79%



[View online »](#)

**Product images:**

Host: Rabbit; Target Name: SPAG16; Sample  
Tissue: HepG2 Whole Cell lysates; Antibody  
Dilution: 1.0ug/ml