

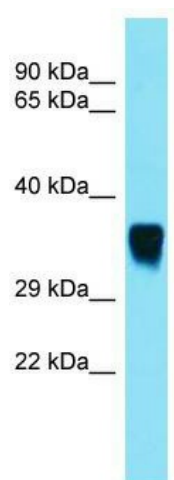
Product datasheet for TA331227

Snx15 Rabbit Polyclonal Antibody

Product data:

Product Type:	Primary Antibodies
Applications:	WB
Recommended Dilution:	WB
Reactivity:	Rat
Host:	Rabbit
Isotype:	IgG
Clonality:	Polyclonal
Immunogen:	The immunogen for Anti-Snx15 antibody is: synthetic peptide directed towards the C-terminal region of Rat Snx15. Synthetic peptide located within the following region: LRNEKAGAYAAALQGYQEGVHILLQGVSGDPSPTRREGVKKKAAEYLKRA
Formulation:	Liquid. Purified antibody supplied in 1x PBS buffer with 0.09% (w/v) sodium azide and 2% sucrose.
Conjugation:	Unconjugated
Storage:	Store at -20°C as received.
Stability:	Stable for 12 months from date of receipt.
Predicted Protein Size:	38 kDa
Gene Name:	sorting nexin 15
Database Link:	NP_001019923 Entrez Gene 293691 Rat Q4V896
Background:	Snx15 may be involved in several stages of intracellular trafficking. Overexpression of SNX15 disrupts the normal trafficking of proteins from the plasma membrane to recycling endosomes or the TGN.
Synonyms:	HSAF001435; OTTHUMP00000035515
Note:	Human: 100%; Dog: 93%; Pig: 93%; Rat: 93%; Horse: 93%; Mouse: 93%; Bovine: 93%; Rabbit: 93%; Guinea pig: 93%; Goat: 86%


[View online »](#)

Product images:

Host: Rabbit; Target Name: Snx15; Sample
Tissue: Rat Muscle lysates; Antibody Dilution:
1.0ug/ml