

Product datasheet for TA331225

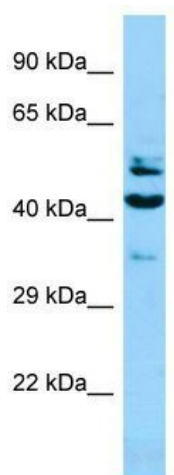
SH2D4A Rabbit Polyclonal Antibody

Product data:

| | |
|-------------------------|---|
| Product Type: | Primary Antibodies |
| Applications: | WB |
| Recommended Dilution: | WB |
| Reactivity: | Human |
| Host: | Rabbit |
| Isotype: | IgG |
| Clonality: | Polyclonal |
| Immunogen: | The immunogen for Anti-SH2D4A antibody is: synthetic peptide directed towards the N-terminal region of Human SH2D4A. Synthetic peptide located within the following region: IWKKVAEKEELEQGSRPAPTLSEEEKIRSLSSSSRNIIQMLADSINRMKAY |
| Formulation: | Liquid. Purified antibody supplied in 1x PBS buffer with 0.09% (w/v) sodium azide and 2% sucrose. <i>Note that this product is shipped as lyophilized powder to China customers.</i> |
| Conjugation: | Unconjugated |
| Storage: | Store at -20°C as received. |
| Stability: | Stable for 12 months from date of receipt. |
| Predicted Protein Size: | 53 kDa |
| Gene Name: | SH2 domain containing 4A |
| Database Link: | NP_071354 Entrez Gene 63898 Human Q9H788 |
| Background: | SH2D4A inhibits estrogen-induced cell proliferation by competing with PLCG for binding to ESR1, blocking the effect of estrogen on PLCG and repressing estrogen-induced proliferation. SH2D4A may play a role in T-cell development and function. |
| Synonyms: | PPP1R38; SH2A |
| Note: | Human: 100% |



[View online »](#)

Product images:

WB Suggested Anti-SH2D4A Antibody; Titration:
1.0 ug/ml; Positive Control: HepG2 Whole Cell