

Product datasheet for **TA331224**

EDG3 (S1PR3) Rabbit Polyclonal Antibody

Product data:

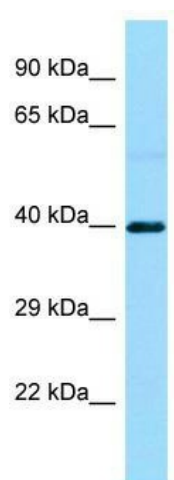
Product Type:	Primary Antibodies
Applications:	WB
Recommended Dilution:	WB
Reactivity:	Human
Host:	Rabbit
Isotype:	IgG
Clonality:	Polyclonal
Immunogen:	The immunogen for Anti-S1PR3 antibody is: synthetic peptide directed towards the C-terminal region of Human S1PR3. Synthetic peptide located within the following region: ISIFTAILVTIVILYARIYFLVKSSSRKVANHHNSERSMALLRTVVIVVS
Formulation:	Liquid. Purified antibody supplied in 1x PBS buffer with 0.09% (w/v) sodium azide and 2% sucrose. <i>Note that this product is shipped as lyophilized powder to China customers.</i>
Conjugation:	Unconjugated
Storage:	Store at -20°C as received.
Stability:	Stable for 12 months from date of receipt.
Predicted Protein Size:	42 kDa
Gene Name:	sphingosine-1-phosphate receptor 3
Database Link:	NP_005217 Entrez Gene 1903 Human Q99500
Background:	This gene encodes a member of the EDG family of receptors, which are G protein-coupled receptors. This protein has been identified as a functional receptor for sphingosine 1-phosphate and likely contributes to the regulation of angiogenesis and vascular endothelial cell function.
Synonyms:	EDG-3; EDG3; LPB3; S1P3
Note:	Human: 100%; Pig: 92%; Rat: 92%; Mouse: 92%; Guinea pig: 92%; Rabbit: 86%; Zebrafish: 77%
Protein Families:	Druggable Genome, GPCR, Transmembrane



[View online »](#)

Protein Pathways: Neuroactive ligand-receptor interaction

Product images:



WB Suggested Anti-S1PR3 Antibody; Titration: 1.0 ug/ml; Positive Control: Hela Whole Cell