

Product datasheet for **TA331223**

RRAGB Rabbit Polyclonal Antibody

Product data:

| | |
|-------------------------|---|
| Product Type: | Primary Antibodies |
| Applications: | WB |
| Recommended Dilution: | WB |
| Reactivity: | Human |
| Host: | Rabbit |
| Isotype: | IgG |
| Clonality: | Polyclonal |
| Immunogen: | The immunogen for Anti-RRAGB antibody is: synthetic peptide directed towards the C-terminal region of Human RRAGB. Synthetic peptide located within the following region: IDIFTSNTYVMVMSDPSIPSAATLINIRNARKHFEKLERVDGPKQCLLM |
| Formulation: | Liquid. Purified antibody supplied in 1x PBS buffer with 0.09% (w/v) sodium azide and 2% sucrose. |
| Purification: | Affinity Purified |
| Conjugation: | Unconjugated |
| Storage: | Store at -20°C as received. |
| Stability: | Stable for 12 months from date of receipt. |
| Predicted Protein Size: | 38 kDa |
| Gene Name: | Ras related GTP binding B |
| Database Link: | NP_057740 Entrez Gene 10325 Human Q5VZM2 |



[View online »](#)

Background:

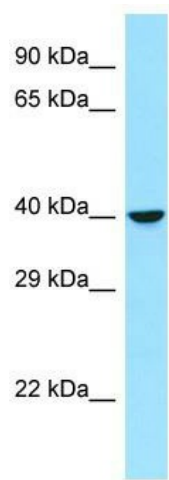
Ras-homologous GTPases constitute a large family of signal transducers that alternate between an activated, GTP-binding state and an inactivated, GDP-binding state. These proteins represent cellular switches that are operated by GTP-exchange factors and factors that stimulate their intrinsic GTPase activity. All GTPases of the Ras superfamily have in common the presence of six conserved motifs involved in GTP/GDP binding, three of which are phosphate-/magnesium-binding sites (PM1-PM3) and three of which are guanine nucleotide-binding sites (G1-G3). Transcript variants encoding distinct isoforms have been identified.

Synonyms:

bA465E19.1; RAGB

Note:

Dog: 100%; Pig: 100%; Rat: 100%; Horse: 100%; Human: 100%; Mouse: 100%; Sheep: 100%; Bovine: 100%; Rabbit: 100%; Guinea pig: 100%; Zebrafish: 93%

Product images:

Host: Rabbit; Target Name: RRAGB; Sample Tissue: PANC1 Whole Cell lysates; Antibody Dilution: 1.0ug/ml