

Product datasheet for **TA331222**

RQCD1 (CNOT9) Rabbit Polyclonal Antibody

Product data:

Product Type:	Primary Antibodies
Applications:	WB
Recommended Dilution:	WB
Reactivity:	Human
Host:	Rabbit
Isotype:	IgG
Clonality:	Polyclonal
Immunogen:	The immunogen for Anti-RQCD1 antibody is: synthetic peptide directed towards the middle region of Human RQCD1. Synthetic peptide located within the following region: SLGVIGALVKTDEQEVINFLLTTEIIPLCRIMESGSELSKTVATFILQK
Formulation:	Liquid. Purified antibody supplied in 1x PBS buffer with 0.09% (w/v) sodium azide and 2% sucrose. <i>Note that this product is shipped as lyophilized powder to China customers.</i>
Purification:	Affinity Purified
Conjugation:	Unconjugated
Storage:	Store at -20°C as received.
Stability:	Stable for 12 months from date of receipt.
Predicted Protein Size:	34 kDa
Gene Name:	CCR4-NOT transcription complex subunit 9
Database Link:	NP_005435 Entrez Gene 9125 Human Q92600
Background:	This gene encodes a member of the highly conserved RCD1 protein family. The encoded protein is a transcriptional cofactor and a core protein of the CCR4-NOT complex. It may be involved in signal transduction as well as retinoic acid-regulated cell differentiation and development. Alternatively spliced transcript variants have been described for this gene.
Synonyms:	CAF40; CT129; RCD-1; RCD1; RQCD1

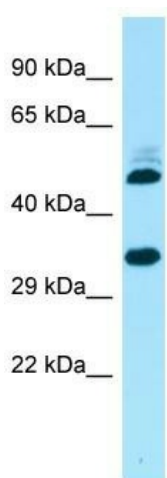


[View online »](#)

Note: Dog: 100%; Pig: 100%; Rat: 100%; Horse: 100%; Human: 100%; Mouse: 100%; Bovine: 100%; Rabbit: 100%; Zebrafish: 100%; Guinea pig: 100%; Yeast: 86%; Goat: 79%

Protein Pathways: RNA degradation

Product images:



Host: Rabbit
Target Name: RQCD1
Sample Tissue: 721_B Cell Lysate
Antibody Dilution: 1.0µg/ml

Host: Rabbit; Target Name: RQCD1; Sample Tissue: 721_B Whole Cell lysates; Antibody Dilution: 1.0ug/ml; RQCD1 is strongly supported by BioGPS gene expression data to be expressed in Human 721_B cells