

Product datasheet for TA331221

RIN2 Rabbit Polyclonal Antibody

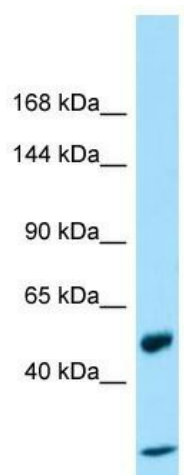
Product data:

Product Type:	Primary Antibodies
Applications:	WB
Recommended Dilution:	WB
Reactivity:	Human
Host:	Rabbit
Isotype:	IgG
Clonality:	Polyclonal
Immunogen:	The immunogen for Anti-RIN2 antibody is: synthetic peptide directed towards the N-terminal region of Human RIN2. Synthetic peptide located within the following region: RTDVNLENGLEPAETHSMVRHKDGGYSEEDVKTCARDSGYDSLNRLSI
Formulation:	Liquid. Purified antibody supplied in 1x PBS buffer with 0.09% (w/v) sodium azide and 2% sucrose.
Purification:	Affinity Purified
Conjugation:	Unconjugated
Storage:	Store at -20°C as received.
Stability:	Stable for 12 months from date of receipt.
Predicted Protein Size:	50 kDa
Gene Name:	Ras and Rab interactor 2
Database Link:	NP_061866 Entrez Gene 54453 Human Q8WYP3
Background:	The function of this protein remains unknown.
Synonyms:	MACS; RASSF4
Note:	Human: 100%; Rat: 83%; Mouse: 83%; Dog: 80%; Pig: 80%; Horse: 80%; Bovine: 80%



[View online »](#)

Product images:



Host: Rabbit
Target Name: RIN2
Sample Tissue: Placenta Lysate
Antibody Dilution: 1.0 μ g/ml

Host: Rabbit; Target Name: RIN2; Sample Tissue: Placenta lysates; Antibody Dilution: 1.0ug/ml