

## Product datasheet for **TA331220**

### Reticulocalbin 3 (RCN3) Rabbit Polyclonal Antibody

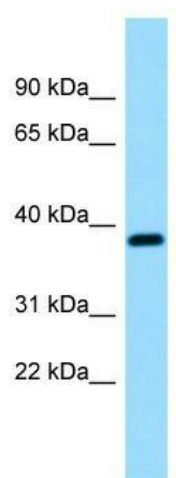
#### Product data:

Product Type:	Primary Antibodies
Applications:	WB
Recommended Dilution:	WB
Reactivity:	Human
Host:	Rabbit
Isotype:	IgG
Clonality:	Polyclonal
Immunogen:	The immunogen for Anti-RCN3 antibody is: synthetic peptide directed towards the C-terminal region of Human RCN3. Synthetic peptide located within the following region: GHWLPPAQDQPLVEANHLLHESDTDKDGRLSKAEILGNWNMFVGSQATN
Formulation:	Liquid. Purified antibody supplied in 1x PBS buffer with 0.09% (w/v) sodium azide and 2% sucrose.
Conjugation:	Unconjugated
Storage:	Store at -20°C as received.
Stability:	Stable for 12 months from date of receipt.
Predicted Protein Size:	35 kDa
Gene Name:	reticulocalbin 3
Database Link:	<a href="#">NP_065701</a> <a href="#">Entrez Gene 57333 Human</a> <a href="#">Q96D15</a>
Background:	The function of this protein remains unknown.
Synonyms:	RLP49
Note:	Dog: 100%; Pig: 100%; Rat: 100%; Horse: 100%; Human: 100%; Mouse: 100%; Bovine: 100%; Rabbit: 100%; Guinea pig: 86%; Zebrafish: 79%



[View online »](#)

## Product images:



WB Suggested Anti-RCN3 Antibody; Titration: 1.0 ug/ml; Positive Control: Fetal Brain