

## Product datasheet for **TA331219**

### Rab6b Rabbit Polyclonal Antibody

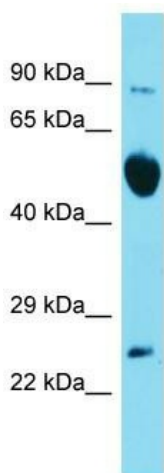
#### Product data:

Product Type:	Primary Antibodies
Applications:	WB
Recommended Dilution:	WB
Reactivity:	Mouse
Host:	Rabbit
Isotype:	IgG
Clonality:	Polyclonal
Immunogen:	The immunogen for Anti-Rab6b antibody is: synthetic peptide directed towards the C-terminal region of Mouse Rab6b. Synthetic peptide located within the following region: KTGYNVKQLFRRVASALPGMENVQEKSKEGMIDIKLDPQEPASEGGCS
Formulation:	Liquid. Purified antibody supplied in 1x PBS buffer with 0.09% (w/v) sodium azide and 2% sucrose.
Purification:	Affinity Purified
Conjugation:	Unconjugated
Storage:	Store at -20°C as received.
Stability:	Stable for 12 months from date of receipt.
Predicted Protein Size:	22 kDa
Gene Name:	RAB6B, member RAS oncogene family
Database Link:	<a href="#">NP_776142</a> <a href="#">Entrez Gene 270192 Mouse P61294</a>
Background:	Rab6b seems to have a role in retrograde membrane traffic at the level of the Golgi complex. It may function in retrograde transport in neuronal cells.
Synonyms:	RAB6B
Note:	Dog: 100%; Pig: 100%; Rat: 100%; Horse: 100%; Human: 100%; Mouse: 100%; Bovine: 100%; Rabbit: 100%; Guinea pig: 100%; Zebrafish: 86%



[View online »](#)

## Product images:



Host: Rabbit  
Target Name: Rab6b  
Sample Tissue: Mouse Brain Lysate  
Antibody Dilution: 1.0 $\mu$ g/ml

Host: Rabbit; Target Name: Rab6b; Sample Tissue: Mouse Brain lysates; Antibody Dilution: 1.0ug/ml