

## Product datasheet for **TA331218**

### PDGFRL Rabbit Polyclonal Antibody

#### Product data:

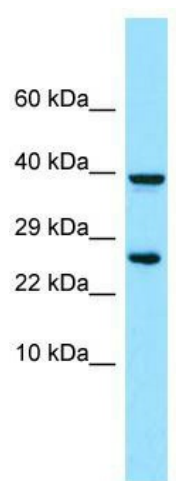
Product Type:	Primary Antibodies
Applications:	WB
Recommended Dilution:	WB
Reactivity:	Human
Host:	Rabbit
Isotype:	IgG
Clonality:	Polyclonal
Immunogen:	The immunogen for Anti-PDGFRL antibody is: synthetic peptide directed towards the N-terminal region of Human PDGFRL. Synthetic peptide located within the following region: KVKPKIPKMKDRDSANSAPKTQSIMMQVLDKGRFQKPAATLSLLAGQTV
Formulation:	Liquid. Purified antibody supplied in 1x PBS buffer with 0.09% (w/v) sodium azide and 2% sucrose. <i>Note that this product is shipped as lyophilized powder to China customers.</i>
Conjugation:	Unconjugated
Storage:	Store at -20°C as received.
Stability:	Stable for 12 months from date of receipt.
Predicted Protein Size:	38 kDa
Gene Name:	platelet derived growth factor receptor like
Database Link:	<a href="#">NP_006198</a> <a href="#">Entrez Gene 5157 Human Q15198</a>
Background:	This gene encodes a protein with significant sequence similarity to the ligand binding domain of platelet-derived growth factor receptor beta. Mutations in this gene, or deletion of a chromosomal segment containing this gene, are associated with sporadic hepatocellular carcinomas, colorectal cancers, and non-small cell lung cancers. This suggests this gene product may function as a tumor suppressor.
Synonyms:	PDGRL; PRLTS
Note:	Human: 100%; Pig: 79%; Rat: 79%; Horse: 79%; Bovine: 75%



[View online »](#)

Protein Families: Druggable Genome, Secreted Protein

### Product images:



WB Suggested Anti-PDGFRL Antibody; Titration:  
1.0 ug/ml; Positive Control: RPMI-8226 Whole Cell