

Product datasheet for TA331216

Noelin (OLFM1) Rabbit Polyclonal Antibody

Product data:

Product Type:	Primary Antibodies
Applications:	WB
Recommended Dilution:	WB
Reactivity:	Human
Host:	Rabbit
Isotype:	IgG
Clonality:	Polyclonal
Immunogen:	The immunogen for Anti-OLFM1 antibody is: synthetic peptide directed towards the N-terminal region of Human OLFM1. Synthetic peptide located within the following region: VLPTNPEESWQVYSSAQDSEGRICITVAPQQTMC SRDARTKQLRQ LLEK
Formulation:	Liquid. Purified antibody supplied in 1x PBS buffer with 0.09% (w/v) sodium azide and 2% sucrose. <i>Note that this product is shipped as lyophilized powder to China customers.</i>
Conjugation:	Unconjugated
Storage:	Store at -20°C as received.
Stability:	Stable for 12 months from date of receipt.
Predicted Protein Size:	46 kDa
Gene Name:	olfactomedin 1
Database Link:	NP_055094 Entrez Gene 10439 Human Q99784
Background:	This gene product shares extensive sequence similarity with the rat neuronal olfactomedin-related ER localized protein. While the exact function of the encoded protein is not known, its abundant expression in brain suggests that it may have an essential role in nerve tissue. Several alternatively spliced transcripts encoding different isoforms have been found for this gene.
Synonyms:	AMY; NOE1; NOELIN1; OlfA

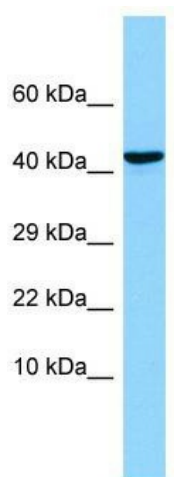


[View online »](#)

Note: Pig: 100%; Rat: 100%; Horse: 100%; Human: 100%; Mouse: 100%; Bovine: 100%; Zebrafish: 100%; Guinea pig: 100%; Dog: 79%; Rabbit: 79%

Protein Families: Druggable Genome

Product images:



WB Suggested Anti-OLFM1 Antibody; Titration: 1.0 ug/ml; Positive Control: Fetal Brain