

## Product datasheet for TA331215

### NCLN Rabbit Polyclonal Antibody

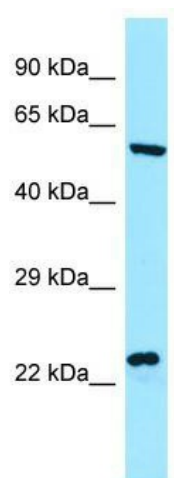
#### Product data:

Product Type:	Primary Antibodies
Applications:	WB
Recommended Dilution:	WB
Reactivity:	Human
Host:	Rabbit
Isotype:	IgG
Clonality:	Polyclonal
Immunogen:	The immunogen for Anti-NCLN antibody is: synthetic peptide directed towards the C-terminal region of Human NCLN. Synthetic peptide located within the following region: DKDSTFLSTLEHHLSRYLKDVQHHVKADKRDPEFVFDQLKQVMNAYRV
Formulation:	Liquid. Purified antibody supplied in 1x PBS buffer with 0.09% (w/v) sodium azide and 2% sucrose. <i>Note that this product is shipped as lyophilized powder to China customers.</i>
Conjugation:	Unconjugated
Storage:	Store at -20°C as received.
Stability:	Stable for 12 months from date of receipt.
Predicted Protein Size:	59 kDa
Gene Name:	nicalin
Database Link:	<a href="#">NP_064555</a> <a href="#">Entrez Gene 56926 Human Q969V3</a>
Background:	NCLN may antagonize Nodal signaling and subsequent organization of axial structures during mesodermal patterning.
Synonyms:	NET59
Note:	Pig: 100%; Human: 100%; Mouse: 100%; Dog: 93%; Rat: 93%; Bovine: 93%; Guinea pig: 86%; Zebrafish: 79%
Protein Families:	Transmembrane



[View online »](#)

## Product images:



WB Suggested Anti-NCLN Antibody; Titration: 1.0 ug/ml; Positive Control: ACHN Whole Cell