

Product datasheet for **TA331214**

fast skeletal Myosin (MYLPF) Rabbit Polyclonal Antibody

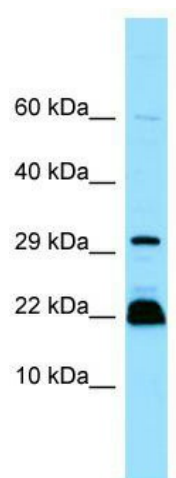
Product data:

Product Type:	Primary Antibodies
Applications:	WB
Recommended Dilution:	WB
Reactivity:	Human
Host:	Rabbit
Isotype:	IgG
Clonality:	Polyclonal
Immunogen:	The immunogen for Anti-MYLPF antibody is: synthetic peptide directed towards the C-terminal region of Human MYLPF. Synthetic peptide located within the following region: LEELLTTQCDRFSQEEIKNMWAAFPDVGGNVDYKNICYVITHGDAKDQE
Formulation:	Liquid. Purified antibody supplied in 1x PBS buffer with 0.09% (w/v) sodium azide and 2% sucrose. <i>Note that this product is shipped as lyophilized powder to China customers.</i>
Conjugation:	Unconjugated
Storage:	Store at -20°C as received.
Stability:	Stable for 12 months from date of receipt.
Predicted Protein Size:	19 kDa
Gene Name:	myosin light chain, phosphorylatable, fast skeletal muscle
Database Link:	NP_037424 Entrez Gene 29895 Human Q96A32
Background:	The function of this protein remains unknown.
Synonyms:	HUMMLC2B; MLC2B; MRLC2; MYL11
Note:	Dog: 100%; Pig: 100%; Rat: 100%; Goat: 100%; Horse: 100%; Human: 100%; Mouse: 100%; Sheep: 100%; Bovine: 100%; Rabbit: 100%; Guinea pig: 100%; Zebrafish: 77%
Protein Pathways:	Focal adhesion, Leukocyte transendothelial migration, Regulation of actin cytoskeleton, Tight junction



[View online »](#)

Product images:



WB Suggested Anti-MYLPF Antibody; Titration: 1.0 ug/ml; Positive Control: Jurkat Whole Cell