

Product datasheet for TA331212

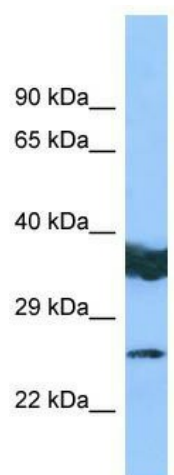
LYPLAL1 Rabbit Polyclonal Antibody

Product data:

Product Type:	Primary Antibodies
Applications:	WB
Recommended Dilution:	WB
Reactivity:	Human
Host:	Rabbit
Isotype:	IgG
Clonality:	Polyclonal
Immunogen:	The immunogen for Anti-LYPLAL1 antibody is: synthetic peptide directed towards the middle region of Human LYPLAL1. Synthetic peptide located within the following region: MCQVLTDLIDEEVKSGIKKNRILIGGFMSGGCMAMHLAYRNHQDVAGVFA
Formulation:	Liquid. Purified antibody supplied in 1x PBS buffer with 0.09% (w/v) sodium azide and 2% sucrose. <i>Note that this product is shipped as lyophilized powder to China customers.</i>
Conjugation:	Unconjugated
Storage:	Store at -20°C as received.
Stability:	Stable for 12 months from date of receipt.
Predicted Protein Size:	26 kDa
Gene Name:	lysophospholipase like 1
Database Link:	NP_620149 Entrez Gene 127018 Human Q5VWZ2
Background:	LYPLAL1 does not exhibit phospholipase nor triacylglycerol lipase activity. It is able to hydrolyze only short chain substrates due to its shallow active site.
Synonyms:	Q96AV0
Note:	Human: 100%; Rabbit: 100%; Dog: 93%; Horse: 93%; Bovine: 86%; Pig: 79%; Mouse: 79%



[View online »](#)

Product images:

WB Suggested Anti-LYPLAL1 Antibody; Titration:
1.0 ug/ml; Positive Control: COLO205 Whole Cell