

Product datasheet for **TA331210**

LIPN Rabbit Polyclonal Antibody

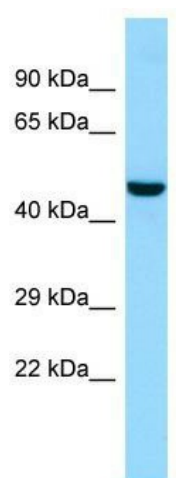
Product data:

Product Type:	Primary Antibodies
Applications:	WB
Recommended Dilution:	WB
Reactivity:	Human
Host:	Rabbit
Isotype:	IgG
Clonality:	Polyclonal
Immunogen:	The immunogen for Anti-LIPN antibody is: synthetic peptide directed towards the C-terminal region of Human LIPN. Synthetic peptide located within the following region: IFTRFFLLPNSIIKAVFGTKGFFLEDKKTKIASTKICNNKILWLICSEFM
Formulation:	Liquid. Purified antibody supplied in 1x PBS buffer with 0.09% (w/v) sodium azide and 2% sucrose. <i>Note that this product is shipped as lyophilized powder to China customers.</i>
Conjugation:	Unconjugated
Storage:	Store at -20°C as received.
Stability:	Stable for 12 months from date of receipt.
Predicted Protein Size:	44 kDa
Gene Name:	lipase family member N
Database Link:	NP_001095939 Entrez Gene 643418 Human Q5VXI9
Background:	The gene encodes a lipase that is highly expressed in granular keratinocytes in the epidermis, and plays a role in the differentiation of keratinocytes. Mutations in this gene are associated with lamellar ichthyosis type 4.
Synonyms:	ARCI8; bA186O14.3; LI4; LIPL4
Note:	Human: 100%



[View online »](#)

Product images:



WB Suggested Anti-LIPN Antibody; Titration: 1.0 ug/ml; Positive Control: Fetal Brain