

## Product datasheet for **TA331208**

### GSDMA Rabbit Polyclonal Antibody

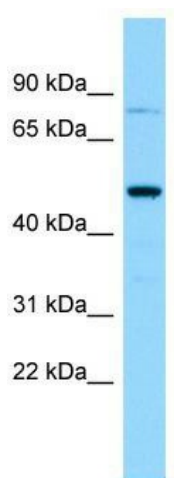
#### Product data:

Product Type:	Primary Antibodies
Applications:	WB
Recommended Dilution:	WB
Reactivity:	Human
Host:	Rabbit
Isotype:	IgG
Clonality:	Polyclonal
Immunogen:	The immunogen for Anti-GSDMA antibody is: synthetic peptide directed towards the C-terminal region of Human GSDMA. Synthetic peptide located within the following region: ICNDNMQTFPPGEGKSGEEKVILIQASDVGDVHEGFRTLKEEVQRETQQVE
Formulation:	Liquid. Purified antibody supplied in 1x PBS buffer with 0.09% (w/v) sodium azide and 2% sucrose. <i>Note that this product is shipped as lyophilized powder to China customers.</i>
Conjugation:	Unconjugated
Storage:	Store at -20°C as received.
Stability:	Stable for 12 months from date of receipt.
Predicted Protein Size:	49 kDa
Gene Name:	gasdermin A
Database Link:	<a href="#">NP_835465</a> <a href="#">Entrez Gene 284110 Human Q96QA5</a>
Background:	GSDMA induces apoptosis.
Synonyms:	FKSG9; GSDM; GSDM1
Note:	Human: 100%; Pig: 85%; Rat: 85%; Horse: 85%; Mouse: 85%; Rabbit: 85%; Guinea pig: 85%



[View online »](#)

## Product images:



WB Suggested Anti-GSDMA Antibody; Titration:  
1.0 ug/ml; Positive Control: Fetal Lung