

Product datasheet for **TA331207**

GPCR150 (GPR160) Rabbit Polyclonal Antibody

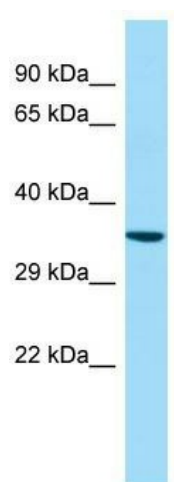
Product data:

Product Type:	Primary Antibodies
Applications:	WB
Recommended Dilution:	WB
Reactivity:	Human
Host:	Rabbit
Isotype:	IgG
Clonality:	Polyclonal
Immunogen:	The immunogen for Anti-GPR160 antibody is: synthetic peptide directed towards the N-terminal region of Human GPR160. Synthetic peptide located within the following region: ILTLGMRRKNTCQNFMEYFCISLAFVDLLLLVNISILYFRDFVLLSIRF
Formulation:	Liquid. Purified antibody supplied in 1x PBS buffer with 0.09% (w/v) sodium azide and 2% sucrose. <i>Note that this product is shipped as lyophilized powder to China customers.</i>
Conjugation:	Unconjugated
Storage:	Store at -20°C as received.
Stability:	Stable for 12 months from date of receipt.
Predicted Protein Size:	40 kDa
Gene Name:	G protein-coupled receptor 160
Database Link:	NP_055188 Entrez Gene 26996 Human Q9UJ42
Background:	GPR160 is an orphan receptor.
Synonyms:	GPCR1; GPCR150
Note:	Human: 100%; Pig: 93%; Dog: 86%; Rat: 86%; Bovine: 86%; Guinea pig: 86%
Protein Families:	Druggable Genome, GPCR, Transmembrane



[View online »](#)

Product images:



WB Suggested Anti-GPR160 Antibody; Titration:
1.0 ug/ml; Positive Control: Fetal Liver