

## Product datasheet for **TA331204**

### Mitochondrial Ferritin (FTMT) Rabbit Polyclonal Antibody

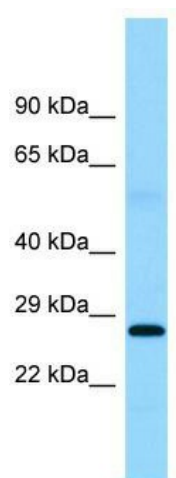
#### Product data:

Product Type:	Primary Antibodies
Applications:	WB
Recommended Dilution:	WB
Reactivity:	Human
Host:	Rabbit
Isotype:	IgG
Clonality:	Polyclonal
Immunogen:	The immunogen for Anti-FTMT antibody is: synthetic peptide directed towards the middle region of Human FTMT. Synthetic peptide located within the following region: AYYFSRDDVALNNFSRYFLHQSREETEHAEKLMRLQNQRGGRIRLQDIKK
Formulation:	Liquid. Purified antibody supplied in 1x PBS buffer with 0.09% (w/v) sodium azide and 2% sucrose. <i>Note that this product is shipped as lyophilized powder to China customers.</i>
Conjugation:	Unconjugated
Storage:	Store at -20°C as received.
Stability:	Stable for 12 months from date of receipt.
Predicted Protein Size:	27 kDa
Gene Name:	ferritin mitochondrial
Database Link:	<a href="#">NP_803431</a> <a href="#">Entrez Gene 94033 Human</a> <a href="#">Q8N4E7</a>
Background:	FTMT stores iron in a soluble, non-toxic, readily available form. FTMT is important for iron homeostasis and has ferroxidase activity. Iron is taken up in the ferrous form and deposited as ferric hydroxides after oxidation.
Synonyms:	MTF
Note:	Human: 100%; Pig: 93%; Rat: 93%; Rabbit: 93%; Horse: 90%; Dog: 86%; Mouse: 86%; Bovine: 86%; Guinea pig: 86%; Goat: 85%; Sheep: 85%; Zebrafish: 79%
Protein Pathways:	Porphyrin and chlorophyll metabolism



[View online »](#)

Product images:



WB Suggested Anti-FTMT Antibody; Titration: 1.0 ug/ml; Positive Control: Placenta