

Product datasheet for TA331203

FIBP Rabbit Polyclonal Antibody

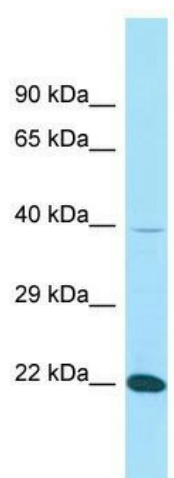
Product data:

Product Type:	Primary Antibodies
Applications:	WB
Recommended Dilution:	WB
Reactivity:	Human
Host:	Rabbit
Isotype:	IgG
Clonality:	Polyclonal
Immunogen:	The immunogen for Anti-FIBP antibody is: synthetic peptide directed towards the N-terminal region of Human FIBP. Synthetic peptide located within the following region: FDEAFVREVLGKKLSKGTKKDLDDISTKTGITLKCRRQFDNFKRVFKVV
Formulation:	Liquid. Purified antibody supplied in 1x PBS buffer with 0.09% (w/v) sodium azide and 2% sucrose. <i>Note that this product is shipped as lyophilized powder to China customers.</i>
Purification:	Affinity Purified
Conjugation:	Unconjugated
Storage:	Store at -20°C as received.
Stability:	Stable for 12 months from date of receipt.
Predicted Protein Size:	38 kDa
Gene Name:	FGF1 intracellular binding protein
Database Link:	NP_942600 Entrez Gene 9158 Human O43427
Background:	The function of this protein remains unknown.
Synonyms:	FGFIBP; FIBP-1; TROFAS
Note:	Dog: 100%; Pig: 100%; Rat: 100%; Horse: 100%; Human: 100%; Mouse: 100%; Bovine: 100%; Guinea pig: 100%; Goat: 93%; Zebrafish: 86%



[View online »](#)

Product images:



Host: Rabbit; Target Name: FIBP; Sample Tissue:
THP-1 Whole Cell lysates; Antibody Dilution:
1.0ug/ml