

Product datasheet for **TA331198**

SP140 Rabbit Polyclonal Antibody

Product data:

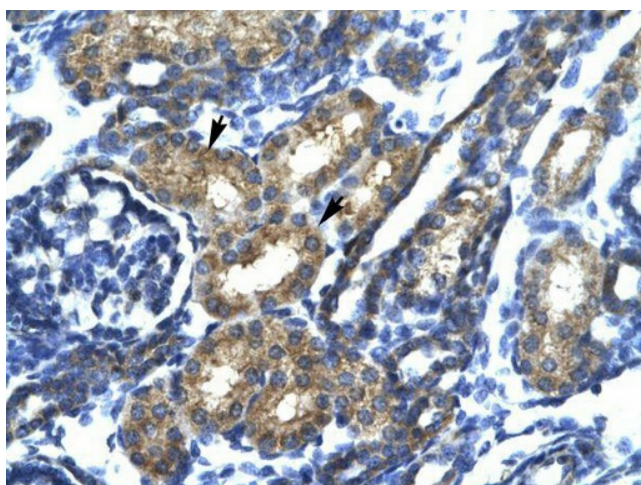
Product Type:	Primary Antibodies
Applications:	IHC, WB
Recommended Dilution:	WB, IHC
Reactivity:	Human
Host:	Rabbit
Isotype:	IgG
Clonality:	Polyclonal
Immunogen:	The immunogen for anti-SP140 antibody: synthetic peptide directed towards the N terminal of human SP140. Synthetic peptide located within the following region: PEPIFRFFRENKVEIASAITRPFPLMGLRDRSFISEQMYEHFQEAFRNL
Formulation:	Liquid. Purified antibody supplied in 1x PBS buffer with 0.09% (w/v) sodium azide and 2% sucrose.
Conjugation:	Unconjugated
Storage:	Store at -20°C as received.
Stability:	Stable for 12 months from date of receipt.
Predicted Protein Size:	20 kDa
Gene Name:	SP140 nuclear body protein
Database Link:	NP_001005176 Entrez Gene 11262 Human Q13342
Background:	SP140 is the nuclear body protein found specifically in all NP cells. HIV-1 infection induced its partial dispersal from nuclear bodies into cytosolic colocalization with Vif.
Synonyms:	LYSP100; LYSP100-A; LYSP100-B
Note:	Human: 100%; Dog: 86%; Pig: 86%; Horse: 86%; Rat: 77%; Mouse: 77%
Protein Families:	Druggable Genome, Transcription Factors



[View online »](#)

Product images:

WB Suggested Anti-SP140 Antibody Titration: 5.0ug/ml; Positive Control: Raji cell lysate SP140 is supported by BioGPS gene expression data to be expressed in Raji



Rabbit Anti-SP 140 Antibody; Paraffin Embedded Tissue: Human Kidney; Cellular Data: Epithelial cells of renal tubule; Antibody Concentration: 4.0-8.0 ug/ml; Magnification: 400X