

## Product datasheet for **TA331197**

### BAZ1A Rabbit Polyclonal Antibody

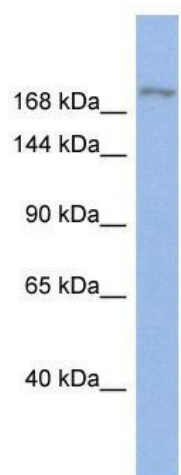
#### Product data:

Product Type:	Primary Antibodies
Applications:	WB
Recommended Dilution:	WB
Reactivity:	Human
Host:	Rabbit
Isotype:	IgG
Clonality:	Polyclonal
Immunogen:	The immunogen for anti-BAZ1A antibody: synthetic peptide directed towards the middle region of human BAZ1A. Synthetic peptide located within the following region: SLPKRGRPQVRLPVKTRGKLSSSFSSRGQQEPGRYPSRSQQSTPKTTVS
Formulation:	Liquid. Purified antibody supplied in 1x PBS buffer with 0.09% (w/v) sodium azide and 2% sucrose. <i>Note that this product is shipped as lyophilized powder to China customers.</i>
Conjugation:	Unconjugated
Storage:	Store at -20°C as received.
Stability:	Stable for 12 months from date of receipt.
Predicted Protein Size:	179 kDa
Gene Name:	bromodomain adjacent to zinc finger domain 1A
Database Link:	<a href="#">NP_038476</a> <a href="#">Entrez Gene 11177 Human</a> <a href="#">Q9NRL2</a>
Background:	BAZ1A may play a role in transcriptional regulation. May be involved in the formation or maintenance of heterochromatin playing a critical role in developmental control.
Synonyms:	ACF1; hACF1; WALp1; WCRF180
Note:	Human: 100%; Rat: 92%; Mouse: 92%; Rabbit: 92%; Dog: 85%; Pig: 85%; Horse: 85%; Bovine: 85%; Guinea pig: 85%
Protein Families:	Druggable Genome



[View online »](#)

## Product images:



WB Suggested Anti-BAZ1A Antibody Titration: 0.2-1 ug/ml; ELISA Titer: 1:312500; Positive Control: Human Stomach