

Product datasheet for **TA331196**

BUD23 Rabbit Polyclonal Antibody

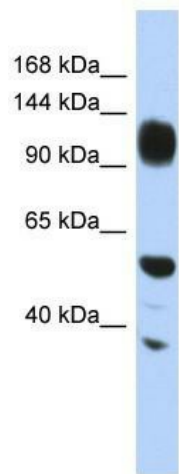
Product data:

Product Type:	Primary Antibodies
Applications:	WB
Recommended Dilution:	WB
Reactivity:	Human
Host:	Rabbit
Isotype:	IgG
Clonality:	Polyclonal
Immunogen:	The immunogen for anti-WDHD1 antibody: synthetic peptide directed towards the middle region of human WDHD1. Synthetic peptide located within the following region: KQILHGDPLPLTRKSYLAWIGFSAEGTPCYVDSEGIVRMLNRGLGNTWTP
Formulation:	Liquid. Purified antibody supplied in 1x PBS buffer with 0.09% (w/v) sodium azide and 2% sucrose. <i>Note that this product is shipped as lyophilized powder to China customers.</i>
Conjugation:	Unconjugated
Storage:	Store at -20°C as received.
Stability:	Stable for 12 months from date of receipt.
Predicted Protein Size:	126 kDa
Gene Name:	Williams-Beuren syndrome chromosome region 22
Database Link:	NP_059998 Entrez Gene 114049 Human O43709



[View online »](#)

Background:	WDHD1 contains multiple N-terminal WD40 domains and a C-terminal high mobility group (HMG) box. WD40 domains are found in a variety of eukaryotic proteins and may function as adaptor/regulatory modules in signal transduction, pre-mRNA processing and cytoskeleton assembly. HMG boxes are found in many eukaryotic proteins involved in chromatin assembly, transcription and replication. WDHD1 may also be involved in protein-protein interactions. The protein encoded by this gene contains multiple N-terminal WD40 domains and a C-terminal high mobility group (HMG) box. WD40 domains are found in a variety of eukaryotic proteins and may function as adaptor/regulatory modules in signal transduction, pre-mRNA processing and cytoskeleton assembly. HMG boxes are found in many eukaryotic proteins involved in chromatin assembly, transcription and replication. Alternative splicing results in two transcript variants encoding different isoforms.
Synonyms:	HASJ4442; HUSSY-3; MERM1; PP3381; WBMT
Note:	Dog: 100%; Pig: 100%; Human: 100%; Bovine: 100%; Rabbit: 100%; Rat: 93%; Horse: 93%; Mouse: 93%
Protein Families:	Druggable Genome
Protein Pathways:	Androgen and estrogen metabolism, Histidine metabolism, Selenoamino acid metabolism, Tyrosine metabolism

Product images:

WB Suggested Anti-WDHD1 Antibody Titration:
0.2-1 ug/ml; ELISA Titer: 1:12500; Positive Control:
HepG2 cell lysate