

## Product datasheet for **TA331194**

### CHES1 (FOXN3) Rabbit Polyclonal Antibody

#### Product data:

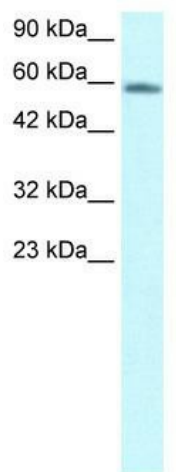
Product Type:	Primary Antibodies
Applications:	WB
Recommended Dilution:	WB
Reactivity:	Human
Host:	Rabbit
Isotype:	IgG
Clonality:	Polyclonal
Immunogen:	The immunogen for anti-CHES1 antibody: synthetic peptide directed towards the C terminal of human CHES1. Synthetic peptide located within the following region: SGYASQHKKRQHFAKARKVPSDTLPLKRRTEKPPESDDEEMKEAAGSLL
Formulation:	Liquid. Purified antibody supplied in 1x PBS buffer with 0.09% (w/v) sodium azide and 2% sucrose. <i>Note that this product is shipped as lyophilized powder to China customers.</i>
Conjugation:	Unconjugated
Storage:	Store at -20°C as received.
Stability:	Stable for 12 months from date of receipt.
Predicted Protein Size:	52 kDa
Gene Name:	forkhead box N3
Database Link:	<a href="#">NP_005188</a> <a href="#">Entrez Gene 1112 Human</a> <a href="#">O00409</a>
Background:	Checkpoint suppressor 1 is a member of the forkhead/winged helix transcription factor family. Checkpoints are eukaryotic DNA damage-inducible cell cycle arrests at G1 and G2. Checkpoint suppressor 1 suppresses multiple yeast checkpoint mutations including mec1, rad9, rad53 and dun1 by activating a MEC1-independent checkpoint pathway.
Synonyms:	C14orf116; CHES1; PRO1635
Note:	Dog: 100%; Pig: 100%; Rat: 100%; Horse: 100%; Human: 100%; Mouse: 100%; Rabbit: 100%; Zebrafish: 100%; Guinea pig: 100%



[View online »](#)

Protein Families: Druggable Genome, Transcription Factors

### Product images:



WB Suggested Anti-CHES1 Antibody Titration:  
1.25ug/ml; Positive Control: HepG2 cell  
lysateFOXN3 is strongly supported by BioGPS  
gene expression data to be expressed in Human  
HepG2 cells